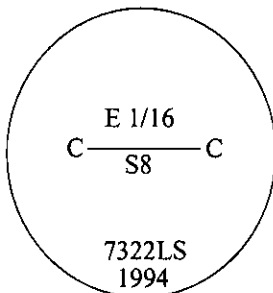


-CERTIFIED CORNER RECORDATION

Corner CE 1/16 Sec. 8 T. 31N R. 33W P.M., MT Lincoln County

XX-AMENDED-XX

I. 1994 Certified Corner Recordation, page no. 7300, by Alvah F. Hughes, 7322LS: Set by survey, a 3/4 in. diam. aluminum rod, 30 ins. long, 26 ins. in the ground, with a 3 1/4 in. diam. aluminum cap, mkd. as shown.



Established two bearing trees:

- A larch, 9 ins. diam., bears East, 9.4 ft. dist., mkd. "CE 1/16 S8 BT".
- A fir, 9 ins. diam., bears N06°E, 13.6 ft. dist., mkd. "CE 1/16 S8 BT".

II. Found a 3/4 in. diam. aluminum rod, with a 3 1/4 in. diam. aluminum cap mkd. as shown above and witnessed by the 1994 bearing trees.

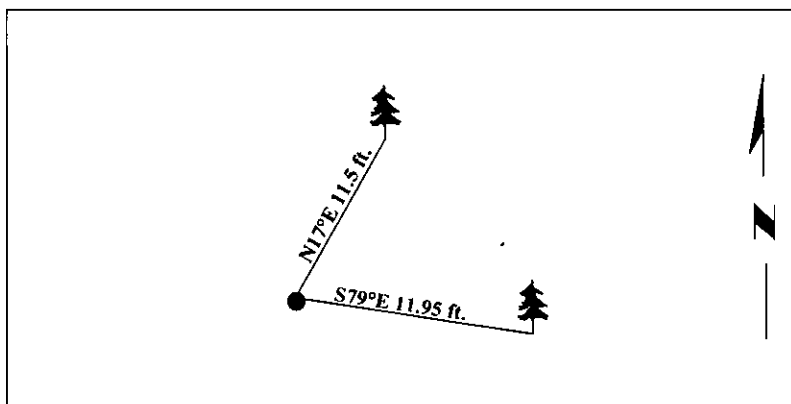
III. *Amended the 1994 Certified Corner Recordation, filed in the Lincoln County Courthouse, May 3, 1995, page no. 7300, due to errors found in the 1994 survey methods, I amended the corner as follows: I moved the found aluminum rod to the newly established position, as determined by survey. I reset the 30 ins. long, 3/4 in. diam. aluminum rod, 25 ins. in the ground, with the original 3 1/4 in. diam. aluminum cap, mkd. as shown.

I used existing bearing trees and established new bearings and distances:

- A fir, 10 ins. diam., bears N17°E, 11.5 ft. dist., mkd. "CE 1/16 S8 BT".
- A larch, 10 ins. diam., bears S79°E, 11.95 ft. dist., mkd. "CE 1/16 S8 BT".

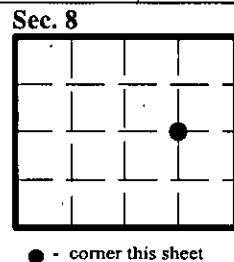
Painted bearing trees and attached Land Survey Monument and Bearing Tree signs.

Magnetic Declination: 20° East



SKETCH OF CORNER

CERTIFICATION	
I, <u>Mark Federman</u>	certify the information shown herein is true and correct.
I, <u>Alvah F. Hughes</u>	certify that this Corner Record correctly represents work performed by me or under my direction in compliance with the "Corner Recordation Act", (70-22-101, et seq., M.C.A.)
Date: <u>8/06/98</u>	Signature of Surveyor & Seal
Reg. No.: <u>7322LS</u>	
Employer: <u>U.S. FOREST SERVICE</u>	



Office of Clerk and Recorder, County of Lincoln. This "corner record" was filed for record on 11-18-98 and was noted on the cross-index plat and is assigned page No. 10256, in book No. _____.

Carol M. Cummings By ALS
County Official