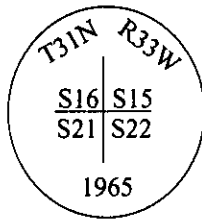


CERTIFIED CORNER RECORDATION

Corner SW Sec. Corner Sec. 15 T. 31N R. 33W P.M, MT Lincoln County

- I. 1893 G.L.O. original record by D. Mumbrue: Set a slatestone, 20x12x3 ins., 15 ins. in the ground, for cor. of secs. 15, 16, 21 and 22, mkd. with 3 notches on S. and E. edges, and established four bearing trees.
- 1965 B.L.M. remonumentation record by D. Lindenberg: The corner of secs. 15, 16, 21 and 22, monu-mented with a slate stone, firmly set, and witnessed by the remains of two of the original bearing trees. At the corner point, set an iron post, 30 ins. long, 2 1/2 ins. diam., 26 ins. in the ground, with brass cap marked mkd. as shown.



Established four new bearing trees and bury the original stone alongside the iron post.

- II. Found a 2 1/2 in. diam. iron pipe, protruding 3 ins. above the ground, firmly set, with a 3 1/4 in. dia. brass cap, mkd. as shown and witnessed by the remains of the B.L.M. and the 1988 bearing trees.

from which:

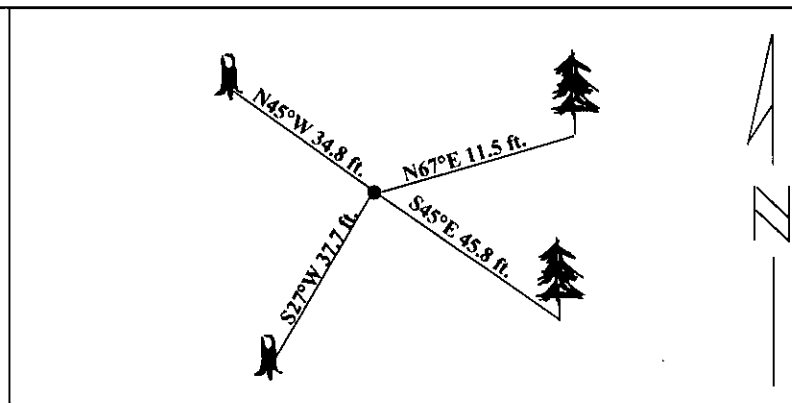
- A pine, 20 ins. diam., bears N67°E, 11.5 ft. dist., with visible scribe. (BLM-record)
A larch, 24 ins. diam., bears S45°E, 45.8 ft. dist., scribe overgrown. (BLM-record)
A high stump, 7 ins. diam., bears S27°W, 37.7 ft. dist., with visible scribe. (1988-record)
A high stump, 7 ins. diam., bears N45°W, 34.8 ft. dist., with visible scribe. (BLM-record)

- III. Established two new bearing trees:

- A fir, 12 ins. diam., beaars S32°W, 105.1 ft. dist., mkd. "T31N R33W S21 BT".
A fir, 9 ins. diam., bears N50°W, 59.7 ft. dist., mkd. "T31N R33W S16 BT".

Painted red bands around the bearing trees and attached Land Survey Monument and Bearing Tree signs.

Magnetic Declination: 20° East



SKETCH OF CORNER

CERTIFICATION

I. **Mark Federman**
certify the Information shown herein is true and correct.

Signature Ground Party Chief

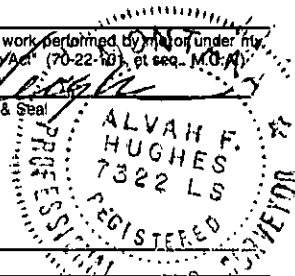
I. **Alvah F. Hughes**
certify that this Corner Record correctly represents work performed by me or under my direction in compliance with the "Corner Recordation Act" (70-22-10), et seq., M.C.A.

Signature of Surveyor & Seal

Date: **6/27/95**

Reg. No.: **7322LS**

Employer: **U.S. FOREST SERVICE**



Office of Clerk and Recorder, County of Lincoln. This "corner record" was filed for record on 10-6-98 was noted on the cross-index plat and is assigned page No. 1021.7 in book No. _____

Coral M. Cummings By DAB
County Official



● - corner this sheet