

INSTRUCTIONS

1. Original and/or subsequent record used to evaluate the corner position.
2. Description of evidence found, note discrepancies in the record, state method of establishing lost or obliterated corners.
3. Description of monument and accessories set to perpetuate the corner position.
4. Sketch of corner, show all pertinent data which can best be shown in a sketch example, corner marking, topography ties, position of accessories, etc.
5. Certification must be signed and sealed by Land Surveyor registered in the State of Montana.
6. Fill in Cross Index & Section Diagram at bottom of sheet.

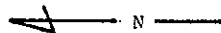
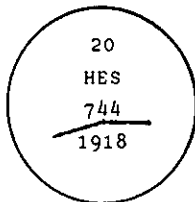
CERTIFIED CORNER RECORDATION

Corner 20 of HES 744 T. 31 N. R. 32 W. P.M.M. Lincoln County

- I. 1918 HES 744 record by Harold Townsend: "Set a small stone, marked with a cross (X) under an iron post 2 ins. in dia. 36 ins. long, 24 ins. in the ground with a brass cap, marked 1918, 20 H.E.S. 744 and a point on top, from which

A cross (x) on a fir tree, 5 ins. in dia., bears N1°05'E, 24.5 links distance.
A cross (x) on a fir tree, 4 ins. in dia., bears N65°16'E, 7 links distance.
each blazed and scribed 20 H.E.S. 744 B.T.
Raise a mound of stone 4 ft. base, 2 ft. high, NE of corner."

- II. Found a 2 ins. diam. iron pipe, 12 ins. above the ground with 2 1/2 ins. diam. U.S.F.S. brass cap, marked as shown:



from which

Rotten remains, bears N1°E, 16.2 ft. (24.5 lks.) dist., visible scribe.
A stump, bears N65°E, 4.6 ft. (7 lks.) dist., visible scribe.

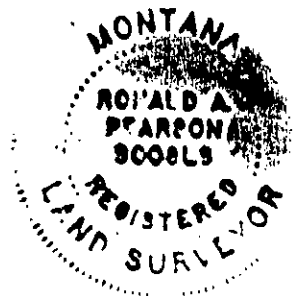
- III. Established two new bearing trees:

A larch, 14 ins. diam., bears S74°W, 11.2 ft. dist., mrk. 20 HES 744 BT.
A fir, 11 ins. diam., bears N35°W, 14.1 ft. dist., mrk. 20 HES 744 BT.

Painted red bands around the bearing trees and attached Land Survey Monument and Bearing Tree signs.

Set a 6 ft. galvanized steel guard post with Land Survey Marker and Property Boundary decals, N19°W, 3 ft.

Magnetic declination: 20° East



CERTIFICATION

I, Thomas M. Hommel
certify the information shown herein is true and correct.

Thomas M. Hommel
Signature Ground Party Chief

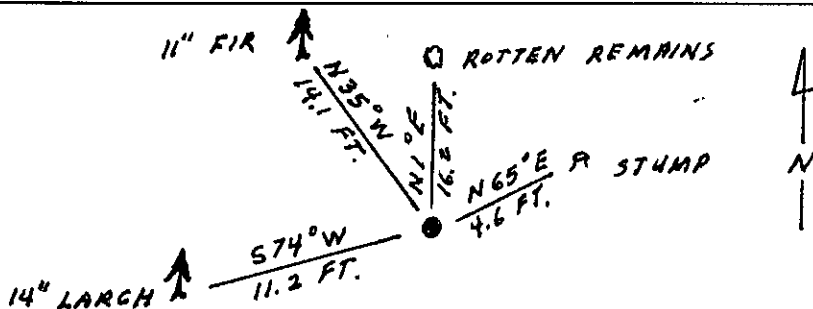
I, Ronald A. Pearson
certify that this Corner Record correctly represents work performed by me or under my direction in compliance with the "Corner Recordation Act" (70-22-101, et seq., M.C.A.)

Ronald A. Pearson
Signature of Surveyor & Seal

Date: 12/9/92 Reg. No. 9008LS

Employer: U.S. FOREST SERVICE

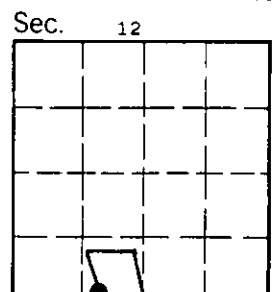
SKETCH OF CORNER



Office of Clerk and Recorder, County of Lincoln. This "corner record" was filed for record on 12-21-92 was noted on the cross-index plat and is assigned page No. 5204, in book No. Carol M. Cummings by BB

County Official

20 HES 744 31 N 32 W
Cross Index No. T. R. PMM



• - corner this sheet