

INSTRUCTIONS

1. Original and/or subsequent record used to evaluate the corner position.
2. Description of evidence found, note discrepancies in the record, state method of establishing lost or obliterated corners.
3. Description of monument and accessories set to perpetuate the corner position.
4. Sketch of corner, show all pertinent data which can best be shown in a sketch example, corner marking, topography ties, position of accessories, etc.
5. Certification must be signed and sealed by Land Surveyor registered in the State of Montana.
6. Fill in Cross Index & Section Diagram at bottom of sheet.

CERTIFIED CORNER RECORDATION

Corner 18 of HES 744 T. 31 N. R. 32 W. P.M.M. Lincoln County

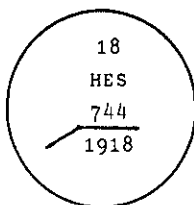
- I. 1918 HES 744 record by Harold Townsend: "Set a small stone, marked with a cross (X) under an iron post 2 ins. in dia. 36 ins. long, 24 ins. in the ground with a brass cap, marked 1918, 18 H.E.S. 744 and a point on top, from which

A cross (x) on a tamarack tree, 24 ins. in dia., bears $N68^{\circ}01'E$, 49 links distance.

A cross (x) on a fir tree, 8 ins. in dia., bears $S63^{\circ}20'E$, 67 links distance, each blazed and scribed 18 H.E.S. 744 B.T.

Raise a mound of earth and stone 4 ft. base, 2 ft. high, NE of corner."

- II. Found a 2 ins. diam. iron pipe, 6 ins. above the ground with 2 1/2 ins. diam. U.S.F.S. brass cap, marked as shown:



← N →

from which

A larch stump, 25 ins. diam., bears $N68^{\circ}E$, 32.0 ft. (48 lks.) dist., mrk. 18 HES 744.

- III. Established two new bearing trees:

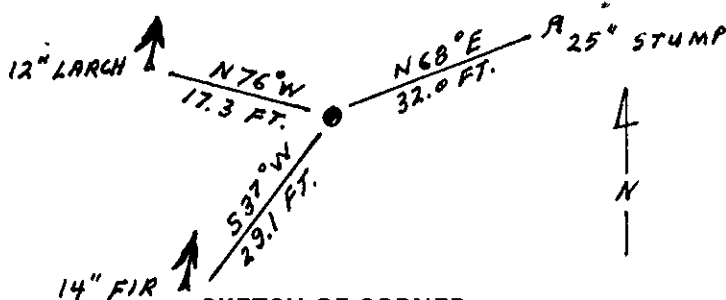
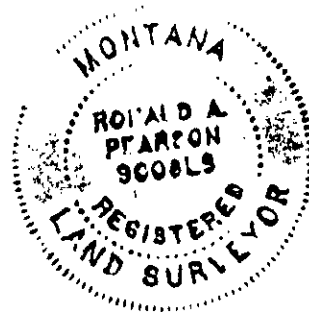
A douglas fir, 14 ins. diam., bears $S37^{\circ}W$, 29.1 ft. dist., mrk. 18 HES 744 BT.

A larch, 12 ins. diam., bears $N76^{\circ}W$, 17.3 ft. dist., mrk. 18 HES 744 BT.

Painted red bands around the bearing trees and attached Land Survey Monument and Bearing Tree signs.

Set a 6 ft. galvanized steel guard post with Land Survey Marker and Property Boundary decals, $N9^{\circ}49'W$, 3 ft.

Magnetic declination: 20° East



SKETCH OF CORNER

CERTIFICATION

I, Thomas M. Hommel
certify the information shown herein is true and correct.

Thomas M. Hommel
Signature Ground Party Chief

I, Ronald A. Pearson
certify that this Corner Record correctly represents work performed by me or under my direction in compliance with the "Corner Recordation Act" (70-22-101, et seq., M.C.A.)

Ronald A. Pearson
Signature of Surveyor & Seal

Date: 12/9/92 Reg. No. 9008LS

Employer: U.S. FOREST SERVICE

Office of Clerk and Recorder, County of Lincoln. This "corner record" was filed for record on 12-21-92 was noted on the cross-index plat and is assigned page No. 5201, in book No. Coral M Cummings by RB

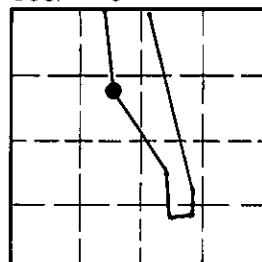
County Official

18 HES 744

31 N 32W

Cross Index No. _____ T. _____ R. _____ PMM

Sec. 13



• - corner this sheet