

INSTRUCTIONS

1. Original and/or subsequent record used to evaluate the corner position.
2. Description of evidence found, note discrepancies in the record, state method of establishing lost or obliterated corners.
3. Description of monument and accessories set to perpetuate the corner position.
4. Sketch of corner, show all pertinent data which can best be shown in a sketch example, corner marking, topography ties, position of accessories, etc.
5. Certification must be signed and sealed by Land Surveyor registered in the State of Montana.
6. Fill in Cross Index & Section Diagram at bottom of sheet.

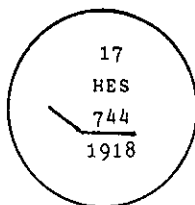
CERTIFIED CORNER RECORDATION

Corner 17 of HES 744 T. 31 N. R. 32 W. P.M.M. Lincoln County

I. 1918 HES 744 record by Harold Townsend: "Set a small stone, marked with a cross (X) under an iron post 2 ins. in dia. 36 ins. long, 24 ins. in the ground with a brass cap, marked 1918, 17 H.E.S. 744 and a point on top, from which

A cross (x) on a lodgepole pine tree, 4 ins. in dia., bears $N8^{\circ}31'E$, 26.5 links distance.
 A cross (x) on a tamarack tree, 15 ins. in dia., bears $S28^{\circ}50'E$, 58 links distance, each blazed and scribed 17 H.E.S. 744 B.T.
 Raise a mound of stone 4 ft. base, 2 ft. high, NE of corner."

II. Found a 2 ins. diam. iron pipe, 6 ins. above the ground with 2 1/2 ins. diam. U.S.F.S. brass cap, marked as shown:



from which

A pine, 10 ins. diam., bears $N10^{\circ}W$, 17.5 ft. (26.5 lks.) dist., mrk. 74.
 (Record: $N8^{\circ}31'E$, 26.5 lks.)
 A larch stump, 16 ins. diam., bears $S27^{\circ}E$, 38.3 ft. (58 lks.) dist., mrk. 17.

III. Established two new bearing trees:

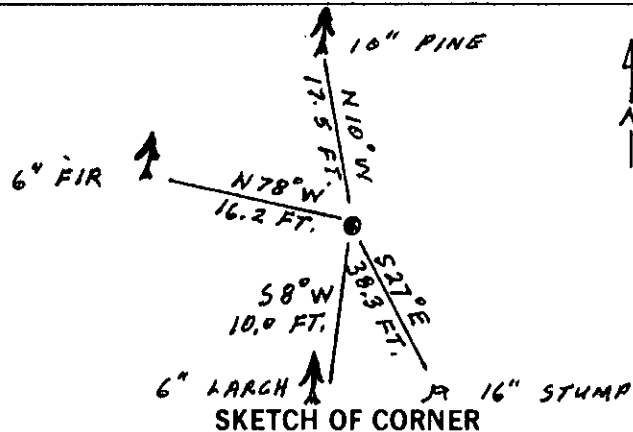
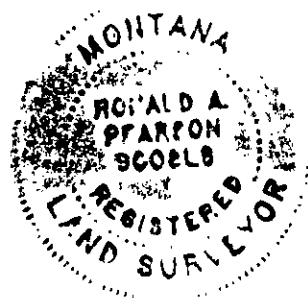
A larch, 6 ins. diam., bears $S8^{\circ}W$, 10.0 ft. dist., mrk. 17 HES 744 BT.
 A fir, 6 ins. diam., bears $N78^{\circ}W$, 16.2 ft. dist., mrk. 17 HES 744 BT.

Painted red bands around the bearing trees and attached Land Survey Monument and Bearing Tree signs.

Set a 6 ft. galvanized steel guard post with Land Survey Marker and Property Boundary decals, $S8^{\circ}E$, 2.2 ft.

Raise a collar of stone around monument.

Magnetic declination: 20° East



CERTIFICATION

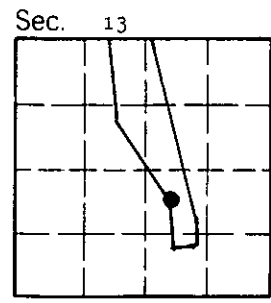
I, Thomas M. Hommel
 certify the information shown herein is true and correct.
 Signature Ground Party Chief

I, Ronald A. Pearson
 certify that this Corner Record correctly represents work performed by me or under my direction in compliance with the "Corner Recordation Act" (70-22-101, et seq., M.C.A.)
 Signature of Surveyor & Seal

Date: 12/9/92 Reg. No. 9008LS
 Employer: U. S. FOREST SERVICE

Office of Clerk and Recorder, County of Lincoln. This "corner record" was filed for record on 12-21-92 was noted on the cross-index plat and is assigned page No. 5200, in book No. _____

Coral M Cummings by BCB
 County Official



17 HES 744 31 N 32W
 Cross Index No. _____ T. _____ R. _____ PMM • - corner this sheet