

INSTRUCTIONS

1. Original and/or subsequent record used to evaluate the corner position.
2. Description of evidence found, note discrepancies in the record, state method of establishing lost or obliterated corners.
3. Description of monument and accessories set to perpetuate the corner position.
4. Sketch of corner, show all pertinent data which can best be shown in a sketch example, corner marking, topography ties, position of accessories, etc.
5. Certification must be signed and sealed by Land Surveyor registered in the State of Montana.
6. Fill in Cross Index & Section Diagram at bottom of sheet.

CERTIFIED CORNER RECORDATION

Corner 10 of HES 744 T. 31 N. R. 32 W. P.M.M. Lincoln County

I. 1918 HES record by Harold Townsend: "Set a small stone, marked with a cross (x) under a limestone, 30x17x12 ins. 20 ins. in the ground marked 10 HES 744 on SW face and a cross (X) on top, from which

- A cross (x) on a fir tree, 15 ins. in dia., bears $S75^{\circ}24'E$, 37 lks. dist.
- A cross (x) on a fir tree, 18 ins. in dia., bears $S26^{\circ}42'W$, 52.5 links distance each blazed and scribed 10 H.E.S. 744 B.T.
- Raise a mound of stone 4 ft. base, 2 ft. high, SW of corner.

II. Found a stone, 15x9 ins., 11 ins. above the ground, firmly set, marked X on top, 10 HES 744 on the SW face, from which

- A fir, 22 ins. diam., bears $S76^{\circ}E$, 22.1 ft. (33 lks.) dist., healed face. (record: 37 lks.)
- A fir stump, 18 ins. diam., bears $S27^{\circ}W$, 34.6 ft. (52.4 lks.) dist., visible scribe.
- Mound of stone, NW of corner. (record: SW)

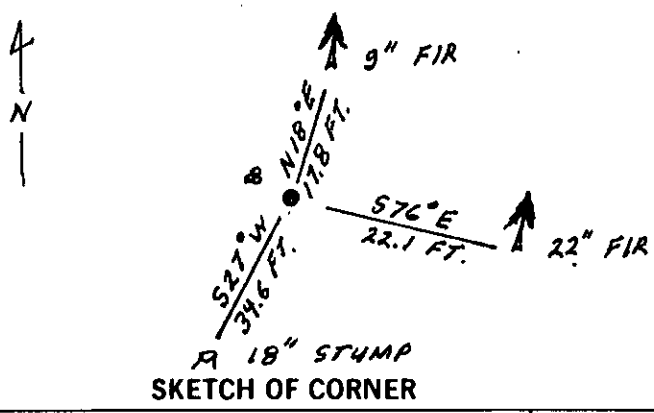
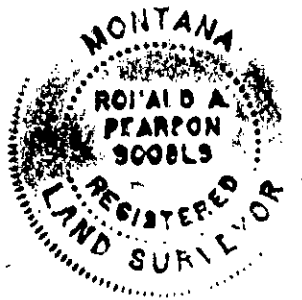
III. Established one new bearing tree:

- A fir, 9 ins. diam., bears $N18^{\circ}E$, 17.8 ft. dist., mrk. 10 HES 744 BT.

Painted red bands around the bearing trees and attached Land Survey Monument and Bearing Tree signs.

Set a 6 ft. galvanized steel guard post with Land Survey Marker and Property Boundary decals, West, 3 ft. dist.

Magnetic declination: 20° East



SKETCH OF CORNER

CERTIFICATION

I, Thomas M. Hommel
certify the information shown herein is true and correct.
Thomas M Hommel
Signature Ground Party Chief

I, Ronald A. Pearson
certify that this Corner Record correctly represents work performed by me or under my direction in compliance with the "Corner Recordation Act" (70-22-101, et seq., M.C.A.)
Ronald A. Pearson
Signature of Surveyor & Seal

Date: 12/9/92 Reg. No. 9008LS
Employer: U. S. FOREST SERVICE

Office of Clerk and Recorder, County of Lincoln. This "corner record" was filed for record on 12-21-92 was noted on the cross-index plat and is assigned page No. 5197, in book No. _____
Coral M. Cummings by BCB
County Official

Sec. 12

• - corner this sheet

10 HES 744 31 N 32 W
Cross Index No. _____ T. _____ R. _____ PMM