

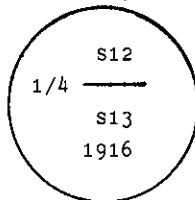
## INSTRUCTIONS

1. Original and/or subsequent record used to evaluate the corner position.
2. Description of evidence found, note discrepancies in the record, state method of establishing lost or obliterated corners.
3. Description of monument and accessories set to perpetuate the corner position.
4. Sketch of corner, show all pertinent data which can best be shown in a sketch example, corner marking, topography ties, position of accessories, etc.
5. Certification must be signed and sealed by Land Surveyor registered in the State of Montana.
6. Fill in Cross Index & Section Diagram at bottom of sheet.

## CERTIFIED CORNER RECORDATION

Corner 1/4 Secs. 12 & 13 T. 31 N. R. 32 W. P.M.M. Lincoln County

- I. 1916 G.L.O. record by M. H. Coffin et al: "Set an iron post, 3 ft. long, 1 in. in diam., 24 ins. in the ground, for 1/4 sec. cor., with brass cap marked



from which

- A cedar, 13 ins. in diam., bears  $N46^{\circ}1/2^{\circ}E$ , 27 lks. dist. marked 1/4 S12 BT.  
A pine, 15 ins. in diam., bears  $S15^{\circ}E$ , 43 lks. dist. marked 1/4 S13 BT.

- II. Found a 1 ins. diam. iron pipe, 25 ins. above the ground, loosely set with 2 1/2 ins. diam. G.L.O. brass cap, marked as shown above, no original bearing trees found.

Cor. No. 1 of HES 744, bears East, 69.1 ft. (1.05 chs.) dist. (record:  $N89^{\circ}44'E$ , 1.04 chs.).

- III. Established two new bearing trees:

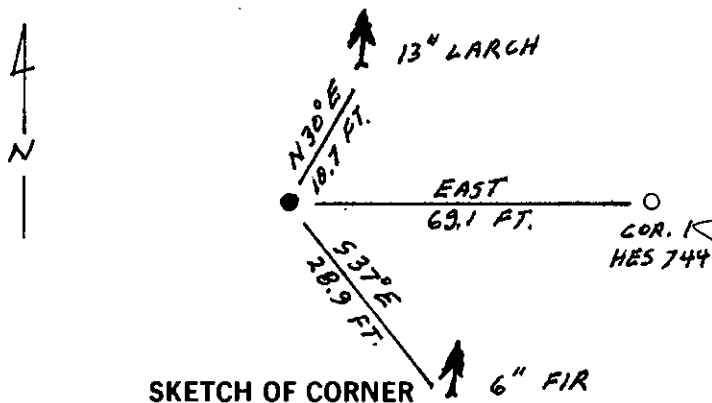
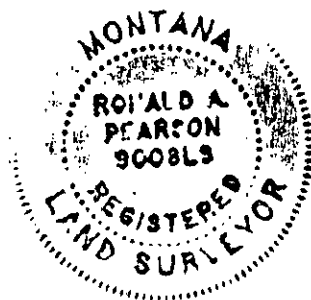
- A larch, 13 ins. diam., bears  $N30^{\circ}E$ , 10.7 ft. dist., mrk. 1/4 S12 BT.  
A fir, 6 ins. diam., bears  $S37^{\circ}E$ , 28.9 ft. dist., mrk. 1/4 S13 BT.

Secured corner in found position with a rock collar around iron pipe monument.

Painted red bands around the bearing trees and attached Land Survey Monument and Bearing Tree signs.

Set a 6 ft. galvanized steel guard post with Land Survey Marker and Property Boundary decals, E. 2 ft.

Magnetic declination:  $20^{\circ}$  East



SKETCH OF CORNER

## CERTIFICATION

I, Thomas M. Hommel  
certify the information shown herein is true and correct.  
Thomas M. Hommel  
Signature Ground Party Chief

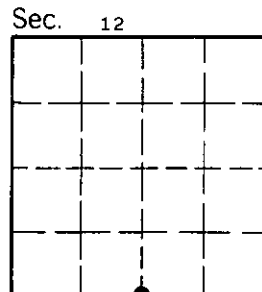
I, Ronald A. Pearson  
certify that this Corner Record correctly represents work performed  
by me or under my direction in compliance with the "Corner  
Recordation Act" (70-22-101, et seq., M.C.A.)

Ronald A. Pearson  
Signature of Surveyor & Seal  
Date: 12/9/92 Reg. No. 9008LS  
Employer: U.S. FOREST SERVICE

Office of Clerk and Recorder, County of Lincoln. This "corner  
record" was filed for record on 12-21-92  
was noted on the cross-index plat and is assigned page No. 5196, in  
book No. Coral M. Cummings by P.B.B.

County Official

J-23 31 N 32W  
Cross Index No. T. R. PMM



• - corner this sheet