

INSTRUCTIONS

1. Original and/or subsequent record used to evaluate the corner position.
2. Description of evidence found, note discrepancies in the record, state method of establishing lost or obliterated corners.
3. Description of monument and accessories set to perpetuate the corner position.
4. Sketch of corner, show all pertinent data which can best be shown in a sketch example, corner marking, topography ties, position of accessories, etc.
5. Certification must be signed and sealed by Land Surveyor registered in the State of Montana.
6. Fill in Cross Index & Section Diagram at bottom of sheet.

CERTIFIED CORNER RECORDATION

Corner 1 & CC HES 744 T. 31 N. R. 32 W. P.M.M. Lincoln County

- I. 1918 HES record by Harold Townsend: "Beginning at closing point on line between Secs. 12 and 13, which I establish for Cor. No. 1 and closing Cor. of this survey as follows: Set a small stone, marked with a cross (x) under a limestone, 28x10x6 ins. 18 ins. in the ground marked CC on NE face, 1 HES 744 on west face and a cross (X) on top, from which

A cross (x) on a fir tree, 16 ins. in dia., bears N30°30'W, 42 lks. dist.

A cross (x) on a yellow pine tree, 12 ins. in dia., bears S44°05'W, 47 links distance each blazed and scribed 1 H.E.S. 744 B.T.

Raise a mound of earth and stone 4 ft. base, 2 ft. high, SE of corner.

- II. Found a stone, 9x5 ins., 10 ins. above the ground, firmly set, marked X on top, CC on NE face, and 1 HES 744 on the west face, from which

A pine, 14 ins. diam., bears S44°W, 31.0 ft. (47 lks.) dist., mrk. 1 HES 744.

A fir stump, 21 ins. diam., bears N30°W, 28.3 ft. (42.9 lks.) dist., mrk. HES 74.

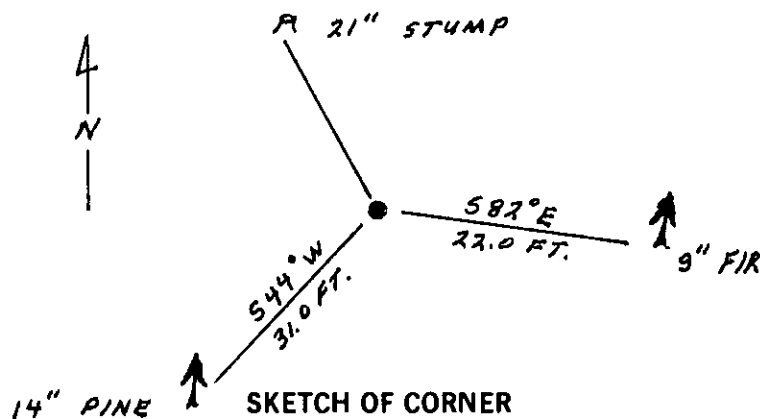
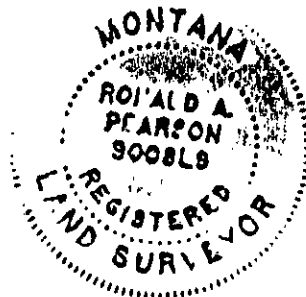
- III. Established one new bearing tree:

A fir, 9 ins. diam., bears S82°E, 22.0 ft. dist., mrk. 1 HES 744 BT.

Painted red bands around the bearing trees and attached Land Survey Monument and Bearing Tree signs.

Set a 6 ft. galvanized steel guard post with Land Survey Marker and Property Boundary decals, S14°E, 3 ft. dist.

Magnetic declination: 20° East



SKETCH OF CORNER

CERTIFICATION

I, Thomas M. Hommel
certify the information shown herein is true and correct.
Thomas M. Hommel
Signature Ground Party Chief

I, Ronald A. Pearson
certify that this Corner Record correctly represents work performed by me or under my direction in compliance with the "Corner Recordation Act" (70-22-101, et seq., M.C.A.)
Ronald A. Pearson
Signature of Surveyor & Seal

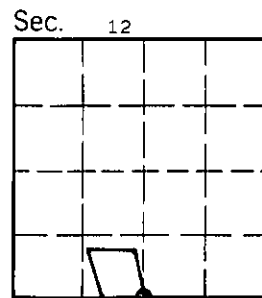
Date: 12/9/92 Reg. No. 9008LS

Employer: U. S. FOREST SERVICE

Office of Clerk and Recorder, County of Lincoln. This "corner record" was filed for record on 12-21-92 was noted on the cross-index plat and is assigned page No. 5195, in book No. Coral M. Cummings by BB

County Official

1 HES 744 31 N 32 W
Cross Index No. T. R. PMM



• - corner this sheet