

# CERTIFIED LAND CORNER RECORDATION

## DESCRIPTION OF CORNER EVIDENCE FOUND, AND ORIGINAL RECORD (IF KNOWN)

H.E.S. No. 441, Corner No. 5

I found 2 B.T.'s per H.E.S. 441 notes and a B.T. per H.E.S. 751 notes. See sketch on reverse.

East 1/4 Corner of Section 24, T31N, R32W, P.M.M.

No evidence remaining. Original record calls for - 14" dia. Fir S73°-24'E 37 Lks.; 18" dia. Red Fir N02°-26'E 56 Lks.

## DESCRIPTION OF MONUMENT AND ACCESSORIES ESTABLISHED TO PERPETUATE THE ORIGINAL LOCATION OF THIS CORNER:

Date of work: Dec. '77

At Corner No. 5 of H.E.S. No. 441 I set a 2" pipe w/Brass Cap scribed as shown on reverse. I use the existing B.T.'s to locate the position of the monument.

At East 1/4 Corner of Section 24, T31N, R32W, P.M.M., also being H.E.S. 441, Corner No. 1, I set a 2" pipe w/Brass Cap scribed as shown on reverse; I make 2 B.T.'s as shown in sketch on reverse.

## SKETCH, WITH COURSE AND DISTANCE TO ADJACENT CORNERS IF DETERMINED IN THIS SURVEY. (MAY SKETCH OR PASTE REPRODUCTION ON REVERSE SIDE.)

(SEE REVERSE)

Surveyor's Seal



I, Ken Davis  
certify that the information shown herein is true and correct.

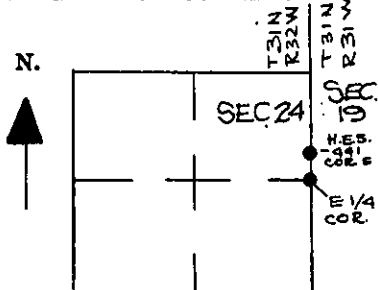
*Ken E. Davis*  
Signature of Ground Party Chief

I, Melvin D. Lauteren  
certify that I have carefully performed or reviewed the work done on the diagrammed corner as reported on this recordation form and approve the same.

*Melvin D. Lauteren*  
Signature of Surveyor

4232-S  
Registration Number

## DIAGRAM OF CORNER:



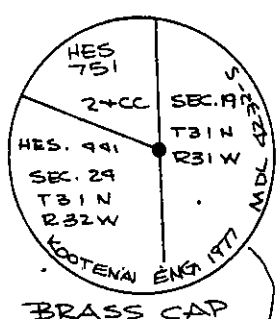
● = Corner recorded on the sheet  
Corner No. 5 of  
H.E.S. 441  
E1/4 Sec. 24, T31N,  
R32W, P.M.M.

Office of Clerk and Recorder, County of Lincoln

This "corner record" was filed for record on the 10<sup>th</sup> day of April 1978, was noted on the cross-index plat and is assigned page No. 517, in book No. 1

*Elmer L. Daugherty*  
County Official

FOUND STONE  
H.E.S. 441  
CORNER NO. 4



RECORD 12" FIR

FD. RED FIR  
5.70' CIRC.

RECORD 2 N 51° 00' - 59' W 2172.58'  
S 51° 03' E 2173.38'

RECORD 18" DIAM. YELLOW PINE

FD. PINE 2.5' DIAM.

RECORD N 70° 30' W 29.04'  
N 70° 10' E 44 LKS. 29.04'

SET BRASS CAP

EAST 7.26'  
S 88° 50' E 11 LKS. 7.26'

RECORD 24" DIAM. YELLOW PINE  
FD. PINE 3.0' DIAM.

H.E.S. 441 CORNER NO. 5  
HES. 751 CORNER NO. 2

SEC 24, T31N, R32W

SEC. 19, T31N, R31W

NEW B.T. 4.2 CIRC. WHITE FIR

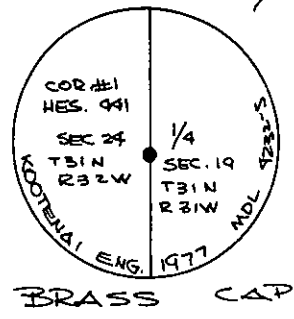
S 88° 37' - 40" W 75.69'

SET BRASS CAP

H.E.S. CORNER NO. 1  
E 1/4 COR. SEC. 24

S 47° 22' - 53" E 48.07'

3.3 CIRC. WHITE FIR NEW B.T.



BRASS CAP

RECORD S 0° 00' - 18" E 1257.30'  
S 0° 01' W 1257.30'

NOT SET

H.E.S. 441 CORNER NO. 2

KOOTENAI

RIVER



FD. 3" SQUARE POST