

INSTRUCTIONS

1. Original and/or subsequent record used to evaluate the corner position.
2. Description of evidence found, note discrepancies in the record, state method of establishing lost or obliterated corners.
3. Description of monument and accessories set to perpetuate the corner position.
4. Sketch of corner, show all pertinent data which can best be shown in a sketch example, corner marking, topography ties, position of accessories, etc.
5. Certification must be signed and sealed by Land Surveyor registered in the State of Montana.
6. Fill in Cross Index & Section Diagram at bottom of sheet.

CERTIFIED CORNER RECORDATION

Corner Cor. No. 7 HES 751 T. 31 North R. 32 West P.M.M. Lincoln County

ORIGINAL – Harold Townsend – 1918 HES 751

Set a small stone marked with a cross "X" under an iron post, 2" diameter, 36" long, 24" in the ground with a brass cap marked 1918 CC7 HES 751 and a point on top from which:

A cross "X" on a fir tree, 4" diameter, bears S8°58'W, 21 links (13.86') distant.

A cross "X" on a yellow pine tree, 4" diameter, bears N57°58'W, 42 links (27.72') distant.

Each blazed and scribed 7 HES 751 BT.

Raise a mound of stone 4' base, 2' high, northwest of corner.

FOUND:

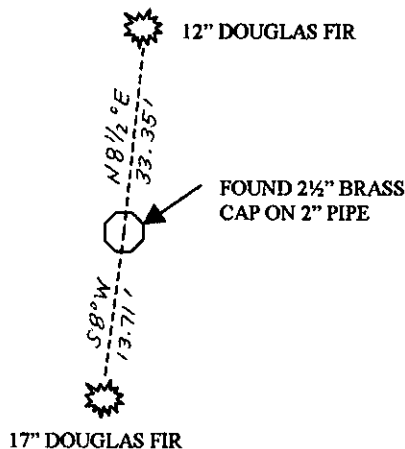
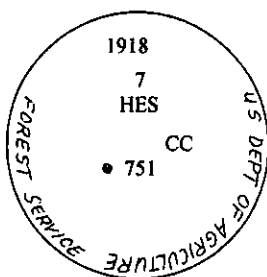
Found 2½" brass cap marked as shown below on 2" diameter pipe.

A 17" diameter Douglas Fir with healed blaze and BLM BT tag bears S8°W, 13.71 feet distant to aluminum nail in side center of tree.

ESTABLISH:

A new 12" diameter Douglas Fir bears N81½°E, 33.35 feet distant to aluminum nail in side center of tree, blaze and scribe 7 HES 751 CC BT.

Paint bearing trees with red paint and attach bearing tree tags.



SKETCH OF CORNER

CERTIFICATION

I, James R. Staples

Certify the information shown herein is true and correct.

James R. Staples
Signature Ground Party Chief

I, James R. Staples

certify that this Corner Record correctly represents work performed by me or under my direction in compliance with the "Corner Recordation Act" (70-22-101, et seq., M.C.A.)

James R. Staples
Signature of Surveyor & Seal

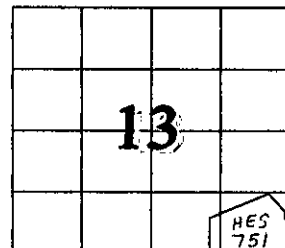
Date 2/11/05 Reg. No. 9958 LS

Employer: J.R.S. Surveying, Inc.

Office of Clerk and Recorder, County of Lincoln, State of Montana
This "corner record" was filed for 185533 BOOK: CCR CC&R'S PAGE: 10797 Pages: 1
was noted on the corner STATE OF MONTANA LINCOLN COUNTY
book no. RECORDED: 06/28/2005 10:15 KOI: CC&R'S
CORAL M. CUMMINGS CLERK AND RECORDER
FEE: \$0.00 BY: Leanne Denny
TO: FILED, _____ County Official

Cross Index No. _____ T. 31N R. 32W PMM

Adopted July 1, 1981, Montana Board of Professional Engineers & Land Surveyors



• - Corner this sheet