

## INSTRUCTIONS

1. Original and/or subsequent record to evaluate the corner position.
2. Description of evidence found, discrepancies in the record, state method of establishing lost or obliterated corner.
3. Description of monument and accessories set to perpetuate the corner position.
4. Sketch of corner, show all pertinent data which can best be shown in a sketch example, corner marking, topography ties, position of accessories, etc.
5. Certification must be signed and sealed by Land Surveyor registered in the State of Montana.
6. Fill in Cross Index & Section Diagram at bottom of sheet.

## CERTIFIED CORNER RECORDATION

Corner Cor. #2 HES 751 T. 31 North R. 31 & 32 West P.M.M. Lincoln County

ORIGINAL - E. Johnson - 1915 HES 441

Set for Cor. #5 HES 441 a stone marked with a cross (X) under a fir post, 42x6x6 inches, 30" in the ground, the exact corner point; from which:

A cross (X) on a Yellow Pine, 24" diameter, bears S85°50'E, 11 links (7.26") distant.

A cross (X) on a Yellow Pine, 18" diameter, bears N10°10'E, 44 links (29.04") distant.

Each blazed and scribed 5 H.E.S. 441 BT. Raise a mound of earth 4 feet base, 2' high, southwest of corner.

H. Townsend - 1916 HES 751

Intersect corner No. 5 of HES 441 which is a post 6" square showing 14" above ground. I destroy the listing bearing trees and adopt this corner for Corner No. 2 and closing corner of this survey; mark it CC 2 HES 751 on northwest face and drive a tack in top for exact corner point, from which:

A cross (X) on a fir tree, 12" diameter, bears N39°20'E, 90 links (65.34") distant.

A cross (X) on a Yellow Pine, 24" diameter, bears S85°50'E, 11 links (7.26") distant.

Each blazed and scribed 2 HES 751 BT. Raise a mound of stone, 4' base, 2' high, northwest of corner.

REMONUMENT - Ken Davis - 1977

Found a 30" diameter pine, bears N70°30'W, 29.04 feet distant per HES 441.

A 22" diameter Red Fir, bears N37°59'E, 65.4 feet distant per HES 441.

A 24" diameter Yellow Pine bears S85°50'E, 7.26 feet distant per HES 751.

At Corner No. 5 of H.E.S. No. 441 0 (Corner No. 2 H.E.S. No. 751) set a 2" pipe with brass cap from existing BT's to locate the position of monument.

## FOUND:

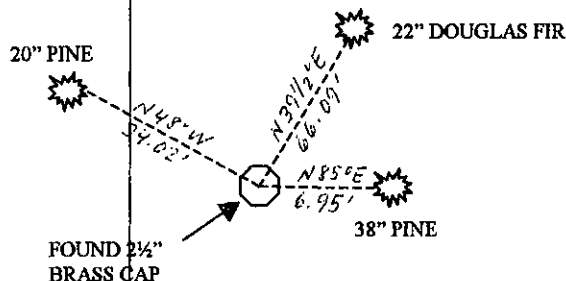
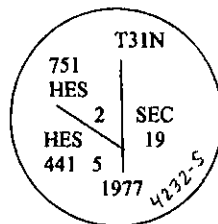
2½" brass cap - PLS #4232S on 2" galvanized pipe marked as shown below, S50°55'58"E, 1.19 feet from Section line.

A 38" pine with chopped face, bears N85°E, 6.95' distant measured to aluminum nail in side center of tree.

A 20" pine with chopped face and visible scribing, bears N48°W, 34.02' distant measured to aluminum nail in side center of tree.

A 22" Douglas Fir with healed face bears N39½°E, 66.09' distant measured to aluminum nail in side center of tree.

Paint trees with red paint and attach bearing tree tags.



## SKETCH OF CORNER

## CERTIFICATION

I, James R. Staples

Certify the information shown herein is true and correct.

*James R. Staples*  
Signature Ground Party Chief

I, James R. Staples

certify that this Corner Record correctly represents work performed by me or under my direction in compliance with the "Corner Recordation Act" (70-22-101, et seq., M.C.A.)

*James R. Staples*  
Signature of Surveyor & Seal

Date 2/4/05 Reg. No. 9958 LS

Employer: J.R.S. Surveying, Inc.

Office of Clerk and Recorder, County of

record" was filed fo

was noted on the cr

book no. \_\_\_\_\_

185532 BOOK: CCR CC&R'S PAGE: 10796 Pages: 1

STATE OF MONTANA LINCOLN COUNTY

RECORDED: 06/28/2005 10:10 KOI: CC&R'S

CORAL M. CUMMINGS CLERK AND RECORDER

FEE: \$0.00

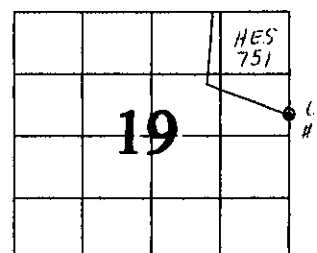
TO: FILED

BY:

County Official

Cross Index No. \_\_\_\_\_ T. 31N R. 32W PMM

Adopted July 1, 1981, Montana Board of Professional Engineers & Land Surveyors



• - Corner this sheet