

CERTIFIED LAND CORNER RECORDATION
(REFERENCE FSM 7153.53)

DESCRIPTION OF CORNER EVIDENCE FOUND, AND ORIGINAL RECORD (IF KNOWN)

No previous record

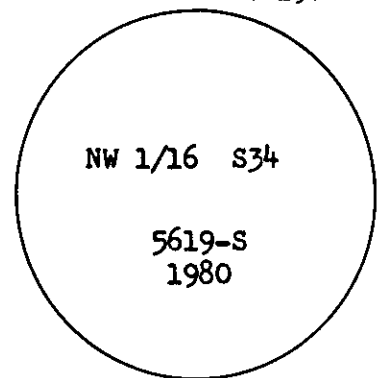
DESCRIPTION OF MONUMENT AND ACCESSORIES ESTABLISHED
TO PERPETUATE THE ORIGINAL LOCATION OF THIS CORNER:

Set a 2½"X30" Aluminum pipe with cap marked:

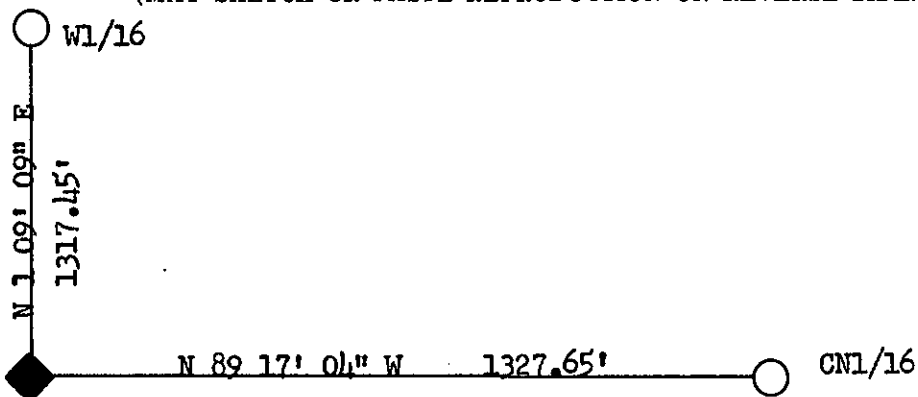
Date of work: Nov. 1980

From which: 5" Pine bears N82°W, 7.5'
marked X BT
9" Pine bears S22°W, 35.9'
marked NW1/16 S34 BT
10" Pine bears S38°W, 20.8'
location poster attached

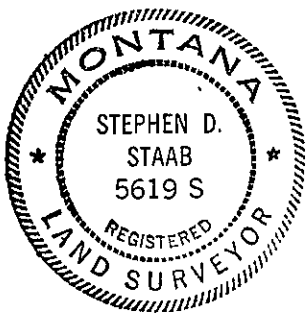
Attached signs and painted a 6" red band around trees.



SKETCH, WITH COURSE AND DISTANCE TO ADJACENT CORNERS IF DETERMINED IN THIS SURVEY.
(MAY SKETCH OR PASTE REPRODUCTION ON REVERSE SIDE.)



Surveyor's Seal



I, Kevin A Todd
certify that the information shown herein is true and correct.

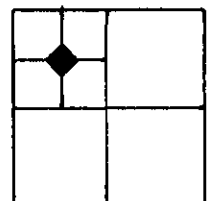
Kevin A Todd
Signature of Ground Party Chief

I, Stephen D Staab
certify that I have carefully performed or reviewed the work done on the diagrammed corner as reported on this recordation form and approve the same.

Stephen D Staab
Signature of Surveyor

DIAGRAM OF CORNER:

N. T31N R31W



◆ = Corner recorded on the sheet

SEC. 34

5619-S
Registration Number

Office of Clerk and Recorder, County of Lincoln

This "corner record" was filed for record on the 4th day of February 1981, was noted on the cross-index plat and is assigned page No. 996, in book No. 1

Eleanor L. Vaughnby Michelle Groom
County Official Deputy Mer.
Cross Index No. W-14 T-31N R-31W