

CERTIFIED LAND CORNER RECORDATION
(REFERENCE FSM 7153.53)

DESCRIPTION OF CORNER EVIDENCE FOUND, AND ORIGINAL RECORD (IF KNOWN)

No previous record

DESCRIPTION OF MONUMENT AND ACCESSORIES ESTABLISHED
TO PERPETUATE THE ORIGINAL LOCATION OF THIS CORNER:

Set a 2½"X30" Aluminum pipe with cap marked:

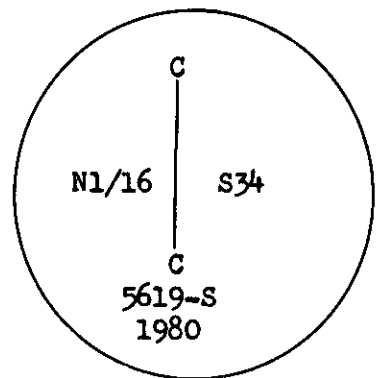
Date of work: Nov 1980

From which: 14" Pine bears N 4°W, 14.8'
marked CN1/16 S¾ BT

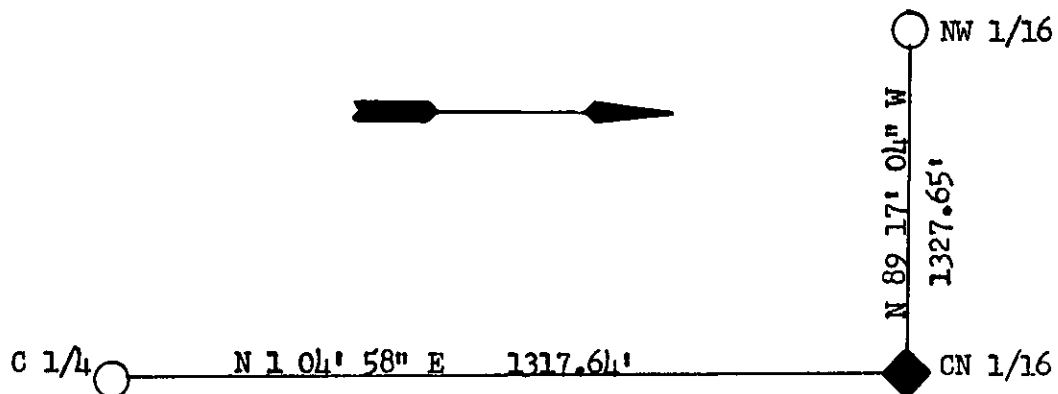
12" Pine bears S27°E, 31.3'
Marked X BT

14" Pine bears S70°W, 5.1'
attached location poster

Attached signs and painted a 6" red band around trees.
Placed a post next to corner with National Forest Boundary
sign attached.



SKETCH, WITH COURSE AND DISTANCE TO ADJACENT CORNERS IF DETERMINED IN THIS SURVEY.
(MAY SKETCH OR PASTE REPRODUCTION ON REVERSE SIDE.)



Surveyor's Seal



I, Kevin A Todd
certify that the information shown herein is true and
correct.

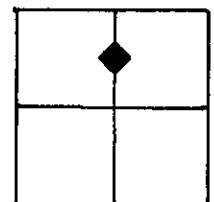
Kevin A Todd
Signature of Ground Party Chief

I, Stephen D. Staab
certify that I have carefully performed or reviewed the
work done on the diagrammed corner as reported on this
recording form and approve the same.

Stephen D Staab
Signature of Surveyor

DIAGRAM OF CORNER:

N. T31N R31W



◆ = Corner recorded on the sheet

SEC 34

5619-S
Registration Number

Office of Clerk and Recorder, County of Lincoln

This "corner record" was filed for record on the 4th day of February 1981, was noted on the cross-index plat and is
assigned page No. 994, in book No. 1

Eleanor L. Vaughn, by Michelle Groom
County Official Deputy

Cross Index No. W-15 T 31N R 31W Mer.