

CERTIFIED LAND CORNER RECORDATION
(REFERENCE FSM 7153.53)

DESCRIPTION OF CORNER EVIDENCE FOUND, AND ORIGINAL RECORD (IF KNOWN)

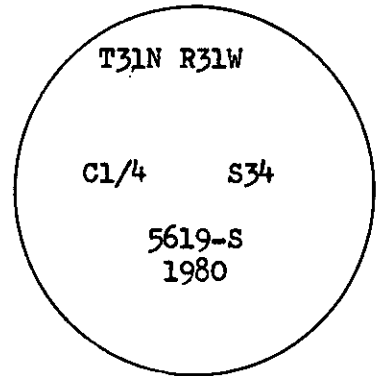
No previous record

DESCRIPTION OF MONUMENT AND ACCESSORIES ESTABLISHED
TO PERPETUATE THE ORIGINAL LOCATION OF THIS CORNER:

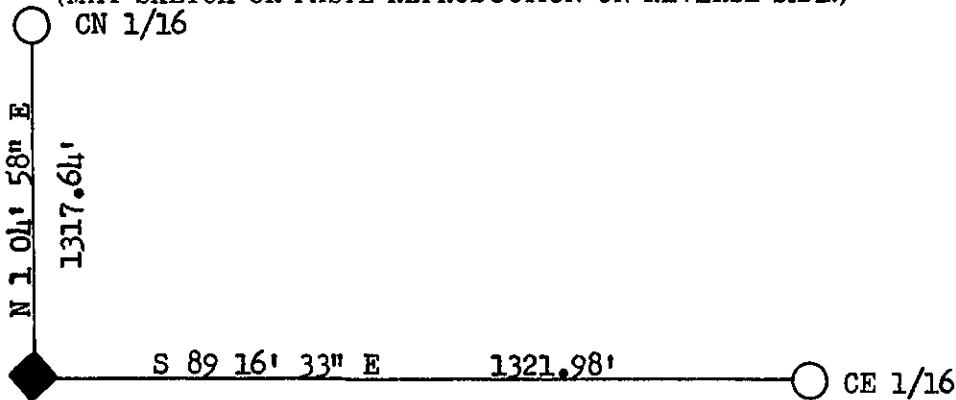
Set a 2½"X30" Aluminum pipe with cap marked:
Raised a collar of stone around cap.

Date of work: Nov 1980

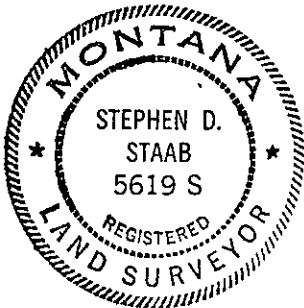
From which:: 5" Pine bears S41°W, 8.4'
marked X BT
10" Pine bears N46°E, 24.5'
marked C1/4 S34 BT
4" Pine bears S68°W, 5.1'
location poster attached
Attached signs and painted a 6" red band around trees.
Placed a post next to corner with National Forest Boundary
sign attached.



SKETCH, WITH COURSE AND DISTANCE TO ADJACENT CORNERS IF DETERMINED IN THIS SURVEY.
(MAY SKETCH OR PASTE REPRODUCTION ON REVERSE SIDE.)



Surveyor's Seal



I, Kevin A Todd
certify that the information shown herein is true and
correct.

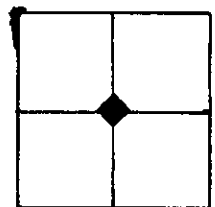
Kevin A Todd
Signature of Ground Party Chief

I, Stephen D Staab
certify that I have carefully performed or reviewed the
work done on the diagrammed corner as reported on this
recording form and approve the same.

Stephen D Staab
Signature of Surveyor

DIAGRAM OF CORNER:

N. T31N R31W



◆ = Corner recorded on the sheet

SEC. 34

5619-S
Registration Number

Office of Clerk and Recorder, County of Lincoln

This "corner record" was filed for record on the 24th day of February, 1981, was noted on the cross-index plat and is
assigned page No. 993, in book No. 1

Eleanor L. Vaughn by Michelle Groom
County Official Deputy

Cross Index No. X-15 T. 31N R. 31W Mer.