

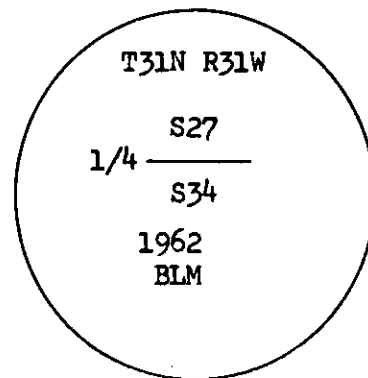
CERTIFIED LAND CORNER RECORDATION
(REFERENCE FSM 7153.53)

DESCRIPTION OF CORNER EVIDENCE FOUND, AND ORIGINAL RECORD (IF KNOWN)

Found iron post with brass cap marked:

From which:: 13" Pine bears N28°E, 29 lks
marked 1/4 S27 BT

11" Larch bears S6°E, 62 lks
marked 1/4 S34 BT

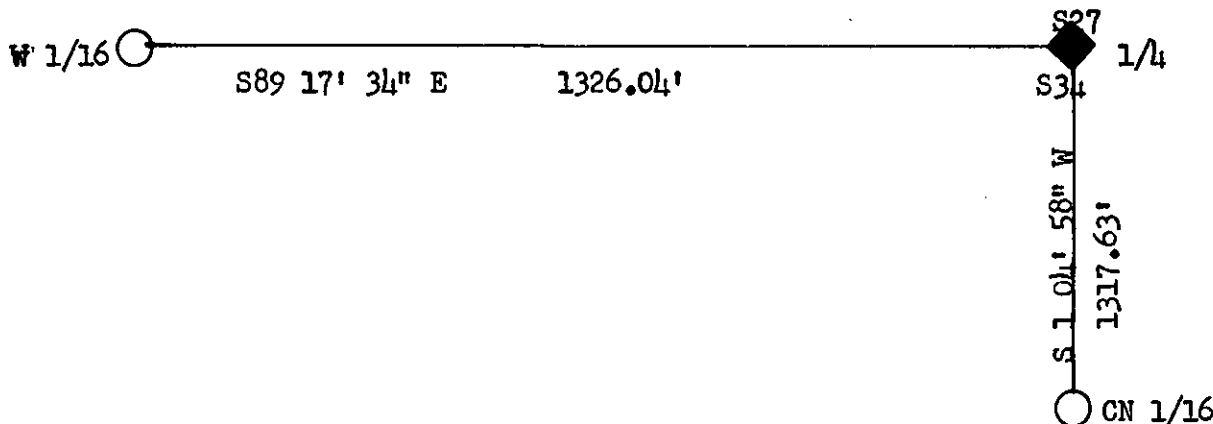


DESCRIPTION OF MONUMENT AND ACCESSORIES ESTABLISHED
TO PERPETUATE THE ORIGINAL LOCATION OF THIS CORNER:

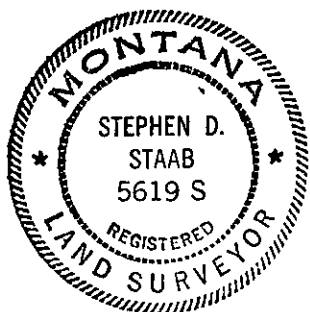
Date of work: Nov 1980

Corner in good condition as found.

SKETCH, WITH COURSE AND DISTANCE TO ADJACENT CORNERS IF DETERMINED IN THIS SURVEY.
(MAY SKETCH OR PASTE REPRODUCTION ON REVERSE SIDE.)



Surveyor's Seal

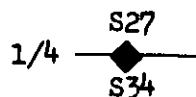


I, Kevin A. Todd
certify that the information shown herein is true and correct.

Kevin A. Todd
Signature of Ground Party Chief

DIAGRAM OF CORNER:

N. T31N R31W



I, Stephen D. Staab
certify that I have carefully performed or reviewed the work done on the diagrammed corner as reported on this recordation form and approve the same.

Stephen D. Staab
Signature of Surveyor

◆ = Corner recorded on the sheet

5619-S
Registration Number

Office of Clerk and Recorder, County of Lincoln

This "corner record" was filed for record on the 4th day of February, 1981, was noted on the cross-index plat and is assigned page No. 992, in book No. 1

Eleanor L. Vaughn by Michele Groom
County Official Deputy
Mer.

Cross Index No. V-15 T. 31N R. 31W