

# CERTIFIED CORNER RECORDATION

Corner 1/4 Sec. 34 & 35 T. 31N R. 31W P.M., MT Lincoln County

I. 1893 G.L.O. original record by Daniel P. Munbrue: 40.00 chs. Set a post 3 ft. long, 3 ins. sq., 24 ins. in the ground, for 1/4 Sec. Cor. , mkd. 1/4 S. in W. face. from which:

A pine 26 ins. diam., bears S 36 1/4°E, 27 lks, (17.82 ft.) dist., mkd. 1-4 S. B.T.  
A pine 24 ins. diam., bears N 77 3/4°W, 63 lks, (41.58ft.) dist., mkd. 1-4 S. B.T.

40.22 chs. Fence, course N 80°E and S 80°W.

1977 Certified Corner Recordation by Melvin D. Lauteren, Reg. No. 4232-S: Found a burned stump which bears S42°29'22"E, 17.82 ft. Found a rock pile in fence line, fence corner described in G.L.O. notes 22 lks. dist., N. of corner. Found fence 14.52 ft. N. of Rock Pile. Set a 1/2 ins. diam., pipe with a 2 ins. diam., brass cap in the midst of a pile of rocks which fits with the original record.  
from which

A fir school marm, 16 ins. diam., bears N 82°5'E, 32.0 ft. dist.  
A pine, 18 ins. diam., bears N 48°42'W, 28.7 ft. dist.



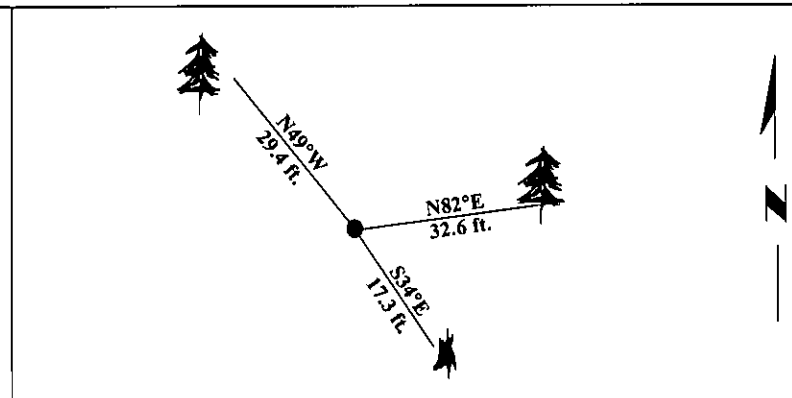
NOTE: Cap is marked with the wrong Township.

II. Found a 1/2 ins. diam. iron pipe, firmly set, with a 2 in. diam. brass cap mkd. as shown above, from which:

A pine, 18 ins. diam., bears N 49°W, 29.4 ft. dist., mkd. "1/4 S34 T30N R31W" (rec. N 48°42'W, 28.7 ft. dist.).  
A fir, 22 ins. diam., bears N 82°E, 32.6 ft. dist., visible scribe marks. (rec. N 82°5'E, 32.6 ft. dist.).  
A burnt stump, bears S 34°E, 17.3 ft. dist., "X" mark visible. (rec. S 36 1/4°E, 17.8 ft. dist. G.L.O. BT).

III. Painted bearing trees and attached Land Survey Monument and Bearing Tree signs.

Magnetic Declination: 20° East.



SKETCH OF CORNER

CERTIFICATION

I, Thomas M. Hommel certify the information shown herein is true and correct.

Ronald A. Pearson Signature Ground Party Chief

I, Ronald A. Pearson certify that this Corner Record correctly represents work performed by me or under my direction in compliance with the "Corner Recordation Act" (70-22-101, et seq., M.C.A.)

Ronald A. Pearson Signature of Surveyor & Seal

Date: 1/31/96

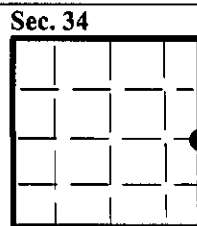
Reg. No.: 9008LS

Employer: U.S. FOREST SERVICE

LINCOLN

Office of Clerk and Recorder, County of \_\_\_\_\_ This "corner record" was filed for record on AUG21, 1997 was noted on the cross-index plat and is assigned page No. 9916 in book No. \_\_\_\_\_

CORAL M. CUMMINGS County Official



• - corner this sheet