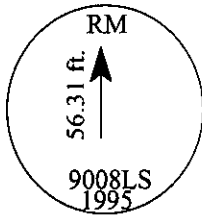


CERTIFIED CORNER RECORDATION

Corner SOUTH REFERENCE MONUMENT NE. COR. TRACT A Sec. 34 T. 31N R. 31W P.M., Lincoln County MT

- I. No previous record
- II. No evidence found.
- III. At the calculated position determined by survey, set a P.K. nail in the highway surface for the NE. cor. of Tract A, from which:

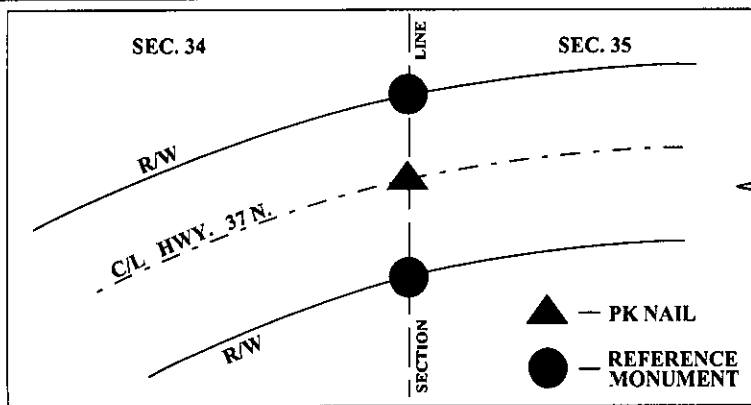
A 3/4 in. diam., 36 in. long aluminum rod, set 34 ins. in the ground, bears SOUTH, 56.31 ft. dist., with a 3 1/2 in. diam. aluminum cap marked as shown below.



The monument is set along the North-South section line between Sec. 34 and Sec. 35, for the South reference monument to the NE. Cor. of Tract A, as shown on Certificate of Survey No. 2299, on file at the Lincoln County Courthouse.

No bearing trees.

Magnetic Declination: 20° East.



CERTIFICATION

I, Thomas M. Hommel certify the information shown herein is true and correct.

Ronald A. Pearson Signature Ground Party Chief

I, Ronald A. Pearson certify that this Corner Record correctly represents work performed by me or under my direction in compliance with the "Corner Recordation Act" (70-22-101, et seq., M.C.A.)

Ronald A. Pearson Signature of Surveyor & Seal

Date: 1/31/96

Reg. No.: 9008LS

Employer: U.S. FOREST SERVICE

SKETCH OF CORNER

Office of Clerk and Recorder, County of LINCOLN. This "corner record" was filed for record on AUG 21, 1997 was noted on the cross-index plat and is assigned page No. 9914 in book No. CORAL M. CUMMINGS By DUB County Official

