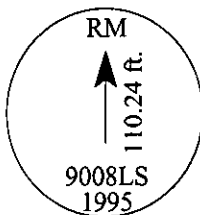


CERTIFIED CORNER RECORDATION

Corner SOUTH REFERENCE MONUMENT NW. COR. TRACT A Sec. 34 T. 31N R. 31W P.M., Lincoln MT County

- I. No previous record
- II. No evidence found.
- III. At the calculated position determined by survey, set a P.K. nail in the highway surface for the NW. cor. of Tract A, from which:

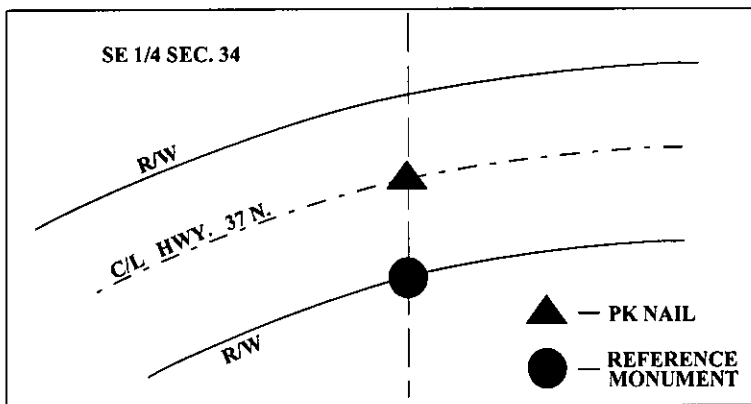
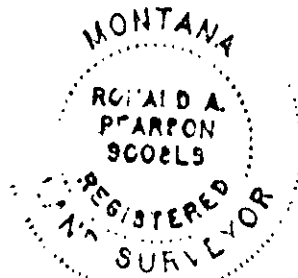
A 3/4 in. diam., 30 ins. long aluminum rod, set 12 ins. in the ground and cut to ground level, bears SOUTH, 110.24 ft. dist., with a 3 1/2 in. diam. aluminum cap marked as shown below.



The monument is set along the subdivisional line between the CE 1/16 and the E 1/16 of Sec. 34, for the South reference monument to the NW. Cor. of Tract A, as shown on Certificate of Survey No. 2299, on file at the Lincoln County Courthouse.

No bearing trees.

Magnetic Declination: 20° East.



CERTIFICATION

I, Thomas M. Hommel  
certify the information shown herein is true and correct.

[Signature]  
Signature Ground Party Chief

I, Ronald A. Pearson  
certify that this Corner Record correctly represents work performed by me or under my direction in compliance with the "Corner Recordation Act" (70-22-101, et seq., M.C.A.)

[Signature]  
Signature of Surveyor & Seal

Date: 1/30/96

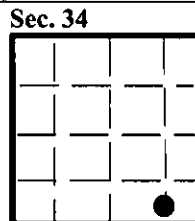
Reg. No.: 9008LS

Employer: U.S. FOREST SERVICE

SKETCH OF CORNER

Office of Clerk and Recorder, County of LINCOLN. This "corner record" was filed for record on AUG21,1997 was noted on the cross-index plat and is assigned page No. 9913 in book No. CORAL M. CUMMINGS B, DEB

County Official



• - corner this sheet

Cross Index No.

T. 31N R. 31W P.M., MT