

# CERTIFIED CORNER RECORDATION

Corner C 1/4 Sec. 10 T. 31N R. 31W P.M., MT Lincoln County

I. 1981 Certificate of Survey #951 filed in Lincoln County Courthouse by M. D. Lauteren #4232-S: Set a 5/8 in. x 24 in. rebar with plastic cap.

1986 Corner Recordation filed in Lincoln County Courthouse by Thomas C. Hill #5612-S: At the determined corner position, found a 5/8 in. diam. steel rebar, protruding 1 in. above ground, with a 1 1/4 in. plastic cap mkd. "MDL 4232 S". Referenced by the following unrecorded references:

A pine, 9 ins. diam., bears N 47°E, 32.2 ft. dist, visible marks: C 1/4 S10.  
A pine, 12 ins. diam., bears N 36°W, 39.6 ft. dist., visible marks: C 1/4 S10

Set a guard post, with a "Survey Marker" decal attached, 1 ft. South from corner.

II. Found a 5/8 in.diam. steel rebar, 1 in. above ground, firmly set, with a 1 1/4 in. plastic cap mkd. as shown:



from which unrecorded bearing trees:

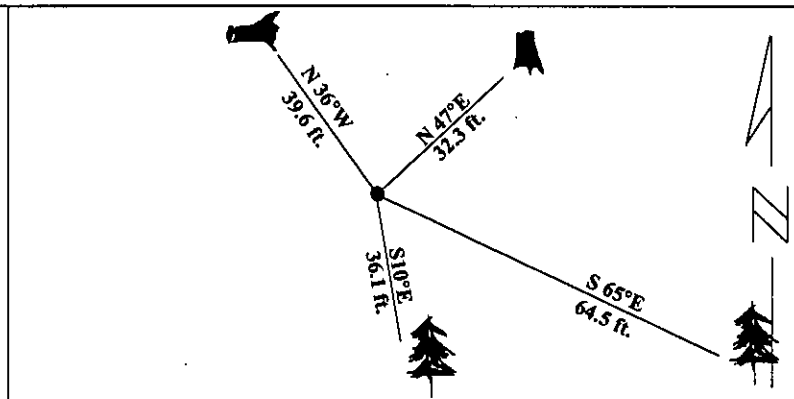
A stump, 10 ins. diam., bears N 47°E, 32.3 ft. dist, with visible scribing.  
A fallen pine stump, bears N 36°W, 39.6 ft. dist., with visible scribing.

III. Established two new bearing trees:

A fir, 12 ins. diam., bears S10°E, 36.1 ft. dist., mkd. "C 1/4 S10 BT".  
A larch, 10 ins. diam., bears S65°E, 64.5 ft. dist., mkd. "C 1/4 S10 BT".

Painted red bands around the bearing trees and attached Land Survey Monument and Bearing Tree signs.

Magnetic Declination: 20° East

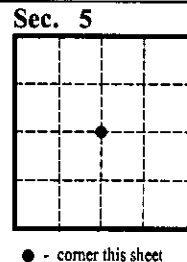


SKETCH OF CORNER

|  |   |
|--|---|
| CERTIFICATION  |   |
| I. <u>Rex O. Rice</u>  | certify the information shown herein is true and correct. |
| <u>Rex O. Rice</u>   | Signature Ground Party Chief                              |
| I. <u>Alvah F. Hughes</u>  |   |
| certify that this Corner Record correctly represents work performed by me or under my direction in compliance with the "Corner Recordation Act" (70-22-101, et seq., M.C.A.) |   |
| <u>Alvah F. Hughes</u>   | Signature of Surveyor Seal                                |
| Date: <u>01/29/96</u>  | Reg. No.: <u>7322LS</u>                                   |
| Employer: <u>U.S. FOREST SERVICE</u>   |   |

Office of Clerk and Recorder, County of LINCOLN. This "corner record" was filed for record on JULY 29, 1997 was noted on the cross-index plat and is assigned page No. 9767 in book No. CORAL M. CUMMINGS By DLB

County Official



• - corner this sheet