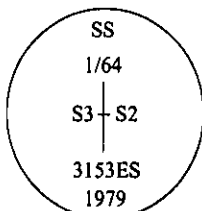


## CERTIFIED CORNER RECORDATION

Corner S-S 1/64 Sec. 3 & 2 T. 31N R. 31W P.M., MT Lincoln County

- I. 1979 Corner Recordation filed in Lincoln County Courthouse by Thomas M. Hanson #3153ES: No orig. record. Set a 2 in. x 30 in. pipe, 24 ins. in the ground, with mound of stone. Cap marked as shown:



from which:

- A fir, 10 ins. diam., bears N30 1/2°E, 31.1 ft. distant.
- A pine, 8 ins. diam., bears S81 1/2°W, 22.1 ft. distant.

- II. Found a brass cap, 6 ins. above ground, firmly set.

from which:

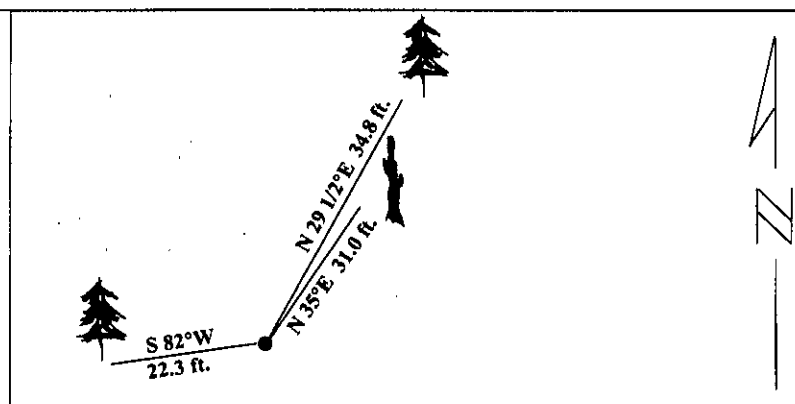
- A pine snag, 8 ins. diam., bears N35°E, 31.0 ft. dist., with visible scribing.
- A pine, 9 ins. diam., bears S82°W, 22.3 ft. dist., with visible scribing.

- III. Established one new bearing tree:

- A larch, 16 ins. diam., bears N29 1/2°E, 34.8 ft. dist., scribed "SS 1/64 S2 BT".

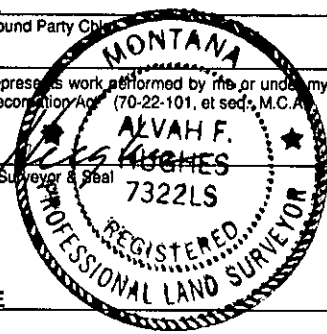
Painted red bands around the bearing trees and attached Land Survey Monument and Bearing Tree signs.

Magnetic Declination: 20° East



**SKETCH OF CORNER**

CERTIFICATION	
I. <u>Rex O. Rice</u> certify the information shown herein is true and correct.	
<i>Rex O. Rice</i> Signature Ground Party Chk.	
I. <u>Alvah F. Hughes</u> certify that this Corner Record correctly represents work performed by me or under my direction in compliance with the "Corner Recordation Act" (70-22-101, et seq., M.C.A.)	
<i>Alvah F. Hughes</i> Signature of Surveyor & Seal	
Date:	<u>01/25/96</u>
Reg. No.:	<u>7322LS</u>
Employer:	<u>U.S. FOREST SERVICE</u>



Office of Clerk and Recorder, County of LINCOLN. This "corner record" was filed for record on JULY 29, 1997 was noted on the cross-index plat and is assigned page No. 9766 in book No. \_\_\_\_\_ CORAL M. CUMMINGS By DLB  
County Official

