

CERTIFIED CORNER RECORDATION

Corner CN 1/16 Sec. 2 T. 31N R. 31W P.M., MT Lincoln County

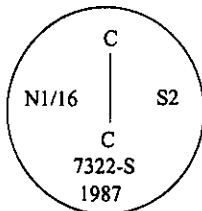
I. 1977 Certificate of Survey #365 filed in Lincoln County Courthouse by J. H. Ninneman #4661-S: Set 5/8 in. dia. rebar.

1987 Certified Corner Recordation filed in Lincoln County Courthouse by A. F. Hughes #7322LS: Set a 3/4 in. diam. alum. rod with 3 1/4 in. diam. alum. cap, marked as shown below, at calculated position. I based my position on the C.O.S. #717, subdivision of Sec. 2, by Hansen, not on subdivision COS No. 3, by Ninneman. Therefore, a discrepancy has resulted. Ninneman rebar bears N10°14'51"W, 9.75 ft. distance.

from which:

A pine, 9 ins. diam., bears N34°E, 38.3 ft. dist, marked "CN 1/16 S2 BT".
A larch, 10 ins. diam., bears N26°W, 20 ft. dist., marked "CN 1/16 S2 BT".

II. Found a 3 1/4 in. dia. aluminum cap, flush with ground mkd. as shown:



from which:

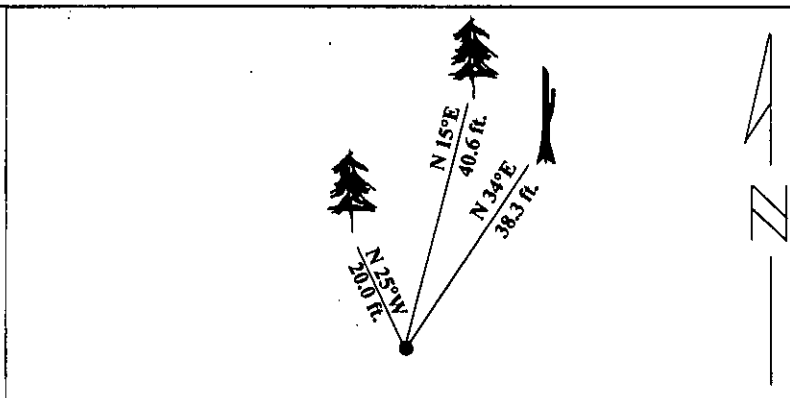
A dead pine, 9 ins. diam., bears N34°E, 38.3 ft. dist, with visible scribing.
A larch, 11 ins. diam., bears N25°W, 20 ft. dist., with visible scribing.

III. Established one new bearing tree:

A larch, 13 ins. diam., bears N15°E, 40.6 ft. dist., mkd. "CN 1/16 S2 BT".

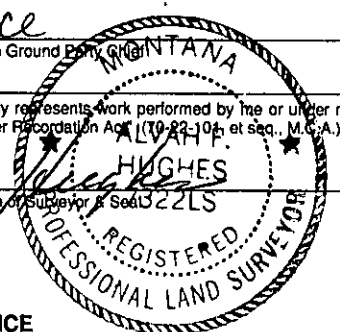
Painted red bands around the bearing trees and attached Land Survey Monument and Bearing Tree signs.

Magnetic Declination: 20° East



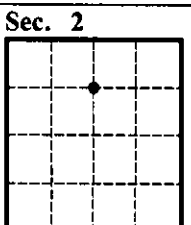
SKETCH OF CORNER

CERTIFICATION	
I. <u>Rex O. Rice</u>	certify the information shown herein is true and correct.
<u>Rex O. Rice</u>	Signature Ground Entry Clerk
I. <u>Alvah F. Hughes</u>	certify that this Corner Record correctly represents work performed by me or under my direction in compliance with the "Corner Recordation Act" (M.C.A. 82-2-101 et seq., M.C.A.)
<u>Alvah F. Hughes</u>	Signature of Submitter
Date: <u>01/25/96</u>	Reg. No.: <u>7322LS</u>
Employer: <u>U.S. FOREST SERVICE</u>	



Office of Clerk and Recorder, County of LINCOLN. This "corner record" was filed for record on JULY 29, 1997 was noted on the cross-index plat and is assigned page No. 9765 in book No. CORAL M. CUMMINGS By DeB

County Official



• - corner this sheet