

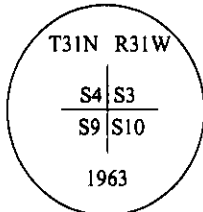
CERTIFIED CORNER RECORDATION

Corner SW Sec. Corner Sec. 3 T. 31N R. 31W P.M, MT Lincoln County

I. 1901 G.L.O. original record: Set a pine post and four bearing trees.

1963 B.L.M. remonumentation record by Gerald F. Pittman: The corner of secs. 3, 4, 9 and 10, as determined from the remains of three of the orig. bearing trees.

At the corner point, set an iron post, 30 ins. long, 2 1/2 ins. diam., 26 ins. in the ground, with brass cap marked:



Established 3 new bearing trees.

1986 Certified Corner Recordation filed in the Lincoln County Courthouse by Thomas C. Hill: Found a BLM cap witnessed by two bearing trees and the remains of four other bearing trees. Established two new bearing trees.

II. Found a B.L.M. brass cap, 2 in. above ground, firmly set, mkd. as shown above.

from which:

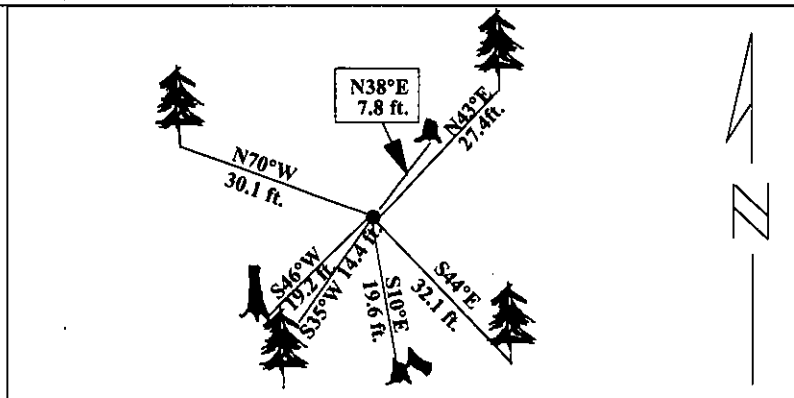
- A rotten root crown, bears N11°E, 33.9 ft. distant. (G.L.O.)
- A pine stump, 9 ins. diam., bears N38°E, 7.8 ft. dist., with visible scribing. (B.L.M. rec. N39°E)
- A larch, 11 ins. diam., bears S44°E, 32.1 ft. dist., with visible scribing. (U.S.F.S. record)
- A broken stump, bears S10°E, 19.6 ft. (29.7 lks.) dist., with visible scribing. (B.L.M. rec. S11°E, 29 lks.)
- A fir, 10 ins. diam., bears S35°W, 14.4 ft. dist., with visible scribing. (U.S.F.S. record)
- A high stump, 18 ins. diam., bears S46°W, 19.2 ft. dist., with visible scribing. (B.L.M. rec. S43°W)
- A rotten root crown, bears N74°W, 47.5 ft. distant. (G.L.O.)
- A fir, 16 ins. diam., bears N70°W, 30.1 ft. dist., with visible scribing. (B.L.M. rec. N66°30'W)

III. Established one new bearing tree:

A larch, 12 ins. diam., bears N43°E, 27.4 ft. dist., mkd. "T31N R31W S3 BT"

Painted red bands around the bearing trees and attached Land Survey Monument and Bearing Tree signs.

Magnetic Declination: 20° East



SKETCH OF CORNER

CERTIFICATION

I. Rex O. Rice

certify the information shown herein is true and correct

Rex O. Rice

Signature Ground Party Chief

I. Alvah F. Hughes

certify that this Corner Record correctly represents work performed by me or under my direction in compliance with the "Corner Recordation Act" (7-1-1911, M.C.A.)

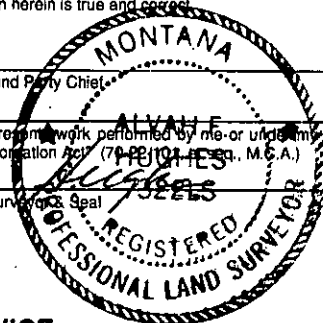
Alvah F. Hughes

Signature of Surveyor

Date: 1/29/95

Reg. No.: 7322LS

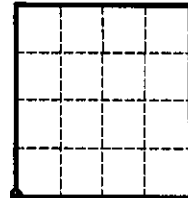
Employer: U.S. FOREST SERVICE



Office of Clerk and Recorder, County of LINCOLN. This "corner record" was filed for record on JULY 29, 1997 was noted on the cross-index plat and is assigned page No. 9764 in book No. CORAL M. CUMMINGS By DUB

County Official

Sec. 3



• - corner this sheet

Cross Index No.

E-13

T.

31N

R.

31W

PMM