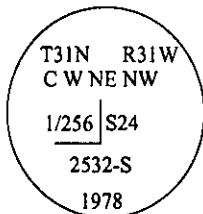


CERTIFIED CORNER RECORDATION

Corner C W NE NW Sec. 24 T. 31N R. 31W P.M., MT Lincoln County
1/256

- I. 1978 Corner Recordation filed in Lincoln County Courthouse by Stanley J. Skousen #2532-S: No record found. No evidence found. Set a 2 1/2 in. diam., 30 ins. long, alum. pipe with cap, 22 ins. in the ground.



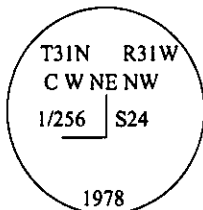
Established two bearing trees:

- A fir, 10 ins. diam., bears S37°E, 31.9 ft. dist., mkd. "CWNENW 1/256 S24 BT".
- A fir, 8 ins. diam., bears N78°W, 10.8 ft. dist., mkd. "CWNENW 1/256 S24 BT".

Raised a mound of rock around monument.

Refer to Cert. of Survey #727, subdivisions of Sec. 24, T31N R31W, as recorded in Lincoln County Courthouse, Libby, Montana.

- II. Found a 2 1/2 in. diam. alum. pipe, 10 in. above ground, firmly set, with a 3 1/4 in. alum. cap, in a collar of stone, mkd as shown.



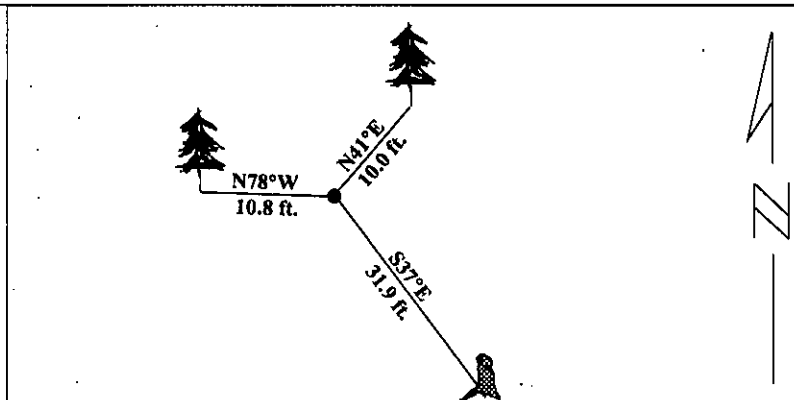
from which:

- A fir stump, bears S37°E, 31.9 ft. dist., with visible scribing.
- A fir, 8 ins. diam., bears N78°W, 10.8 ft. dist., with visible scribing.

- III. Established one new bearing tree:
A pine, bears N41°E, 10.0 ft. dist., mkd. "C W NE NW 1/256 S24 BT".

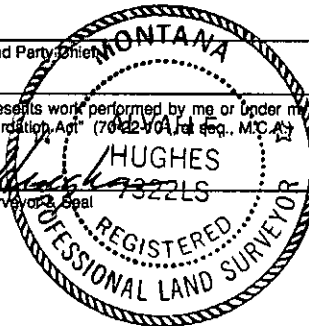
Painted red bands around the bearing trees and attached Land Survey Monument and Bearing Tree signs.

Magnetic Declination: 20° East



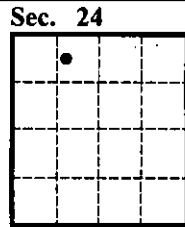
SKETCH OF CORNER

CERTIFICATION	
I. <u>Rex O. Rice</u>	certify the information shown herein is true and correct.
<u>Rex O. Rice</u>	Signature Ground Party Chief
I. <u>Alvah F. Hughes</u>	certify that this Corner Record correctly represents work performed by me or under my direction in compliance with the "Corner Recordation Act" (70-22-101 et seq., M.C.A.)
<u>Alvah F. Hughes</u>	Signature of Surveyor's Seal
Date: <u>01/29/96</u>	
Reg. No.: <u>7322LS</u>	
Employer: <u>U.S. FOREST SERVICE</u>	



Office of Clerk and Recorder, County of LINCOLN. This "corner record" was filed for record on JULY 29, 1997 was noted on the cross-index plat and is assigned page No. 9762 in book No. CORAL M. CUMMINGS

County Official



● - corner this sheet