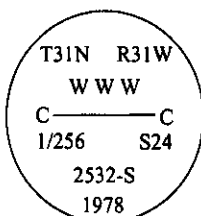


CERTIFIED CORNER RECORDATION

Corner C W W W 1/256 Sec. 24 T. 31N R. 31W P.M., MT Lincoln County

- I. 1978 Corner Recordation filed in Lincoln County Courthouse by Stanley J. Skousen #2532-S: No record found. No evidence found. Set a 2 1/2 in. diam., 30 ins. long, alum. pipe with cap, 24 ins. in the ground.



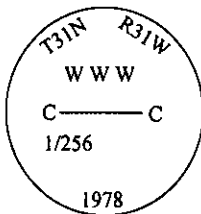
Established two bearing trees:

- A fir, 9 ins. diam., bears S81°E, 19.8 ft. dist., mkd. "CWWW 1/256 S24 BT".
A larch, 6 ins. diam., bears N11°W, 10.7 ft. dist., mkd. "CWWW 1/256 S24 BT".

Raised a mound of rock around monument.

Refer to Cert. of Survey #727, subdivisions of Sec. 24, T31N R31W, as recorded in Lincoln County Courthouse, Libby, Montana.

- II. Found a 2 1/2 in. diam. alum. pipe, 8 in. above ground, firmly set, with a 3 1/4 in. alum. cap, in a collar of stone, mkd as shown.

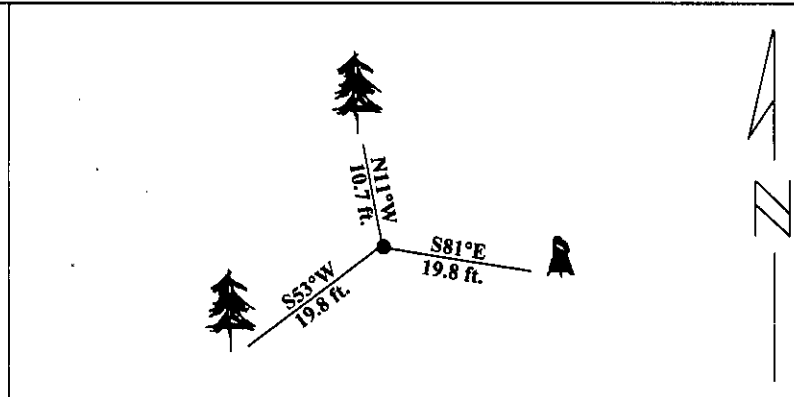


from which:

- A fir stump, 12 ins. diam., bears S81°E, 19.8 ft. distant.
A larch, 11 ins. diam., bears N11°W, 10.7 ft. dist., mkd. with visible scribing.

- III. Established one new bearing tree:
A fir, 14 ins. diam., bears S53°W, 19.8 ft. dist., mkd. "W W W 1/256 S24 BT".

Painted red bands around the bearing trees and attached Land Survey Monument and Bearing Tree signs.
Magnetic Declination: 20° East



SKETCH OF CORNER

CERTIFICATION

I, Rex O. Rice
certify the information shown herein is true and correct.

Rex O. Rice
Signature Ground Party Chief

I, Alvah F. Hughes
certify that this Corner Record correctly represents work performed by me or under my direction in compliance with the "Corner Recordation Act" (70-22101 act sec. M.E.A.)

Alvah F. Hughes
Signature of Surveyor & Seal

Date: 01/30/96

Reg. No.: 7322LS

Employer: U.S. FOREST SERVICE

MONTANA
ALVAH F. HUGHES
7322LS
REGISTERED
PROFESSIONAL LAND SURVEYOR

Office of Clerk and Recorder, County of LINCOLN. This "corner record" was filed for record on JULY 29, 1997 was noted on the cross-index plat and is assigned page No. 9761 in book No.

CORAL M. CUMMINGS
County Official

By OLB

