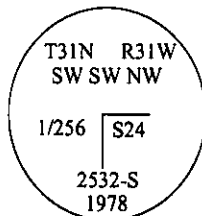


CERTIFIED CORNER RECORDATION

Corner SW-SW-NW Sec. 24 T. 31N R. 31W P.M., MT Lincoln County
1/256

- I. 1987 Corner Recordation by Stanley J. Skousen #2532-S filed in the Lincoln County Courthouse: With no evidence of corner found, Set a 2 1/2 in. x 30 in. alum. pipe with cap, set 24 ins. in the ground.



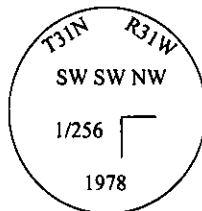
from which:

- A fir, 12 ins. diam., bears S45°E, 27.2 ft. dist., mkd. "SWSWNW 1/256 S24 BT".
A fir, 10 ins. diam., bears N35°W, 23.4 ft. dist., mkd. "SWSWNW 1/256 S24 BT".

Raised a rock mound around cap.

Refer to Certificate of Survey # 727, subdivision of Sec. 24, T31N T31W, as recorded in Lincoln County Courthouse, Libby, Montana.

- II. Found a 2 1/2 in. diam. alum. pipe, 8 ins. above ground, firmly set, with a 3 1/4 in. alum. cap mkd. as shown below.

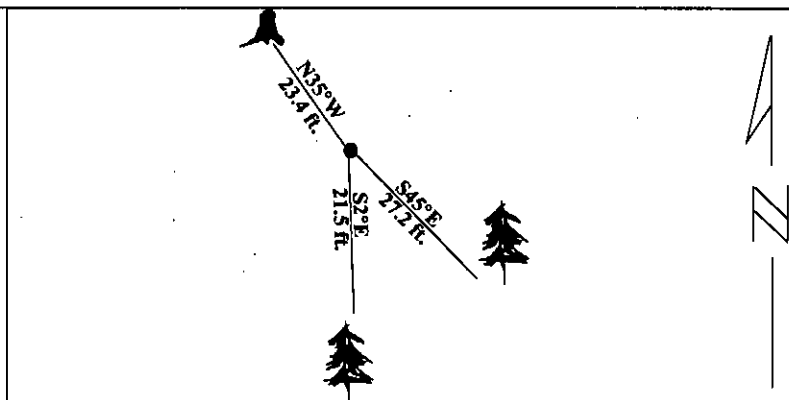


from which:

- A fir, 13 ins. diam., bears S45°E, 27.2 ft. dist., mkd. with visible scribing.
A fir stump, 15 ins. diam., bears N35°W, 23.4 ft. dist., mkd. with visible scribing.

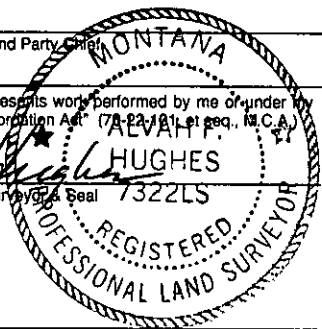
- III. Established one new bearing tree:
A fir, 11 ins. diam., bears S2°E, 21.5 ft. dist., scribed "SW SW NW 1/256 S24 BT".

Painted red bands around the bearing trees and attached Land Survey Monument and Bearing Tree signs.
Magnetic Declination: 20° East



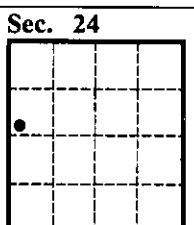
SKETCH OF CORNER

CERTIFICATION	
I. <u>Rex O. Rice</u>	certify the information shown herein is true and correct.
<u>Rex O. Rice</u>	Signature Ground Party Chief
I. <u>Alvah F. Hughes</u>	certify that this Corner Record correctly represents work performed by me or under my direction in compliance with the "Corner Recordation Act" (78-22-101, et seq., M.C.A.)
<u>Alvah F. Hughes</u>	Signature of Surveyor
Date: <u>01/29/96</u>	Reg. No.: <u>7322LS</u>
Employer: <u>U.S. FOREST SERVICE</u>	



Office of Clerk and Recorder, County of LINCOLN. This "corner record" was filed for record on JULY 29, 1997 was noted on the cross-index plat and is assigned page No. 9758 in book No. CORAL M. CUMMING

County Official



● - corner this sheet

Cross Index No. O.75-21.25 T. 31N R. 31W PMM