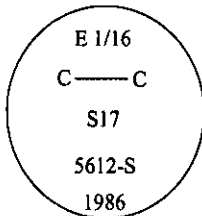


CERTIFIED CORNER RECORDATION

Corner CE 1/16 Sec. 17 T. 31N R. 31W P.M., MT Lincoln County

- I. 1986 Corner Recordation by Thomas Hill #5612-S: At the determined position, set an alum. rod, 3/4 ins. diam., 30 ins. long, 28 ins. in the ground, with a 3 1/4 in. diam. alum. cap mkd as shown:



Established two bearing trees:

- A larch, 10 ins. diam., bears N40°E, 27.9 ft. dist., mkd. "CE 1/16 S17 BT".
A fir, 8 ins. diam., bears S18°E, 23.9 ft. dist., mkd. "CE 1/16 S17 BT".

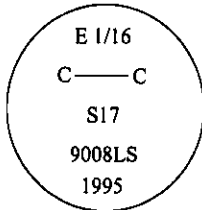
Set a guard post, with a "Survey Marker" decal attached, 3 ft. N. from corner.

- II. Found:

- A larch, 12 ins. diam., mkd. with a healed face.
A fir, 10 ins. diam., with visible scribing.
A steel guard post with LSM and PB decals.

No evidence of the original corner monument was found.

- III. Set by dist.-dist. intersect from found bearing trees, a 2 1/2 in. diam., 30 in. long. alum. pipe, 26 ins. into the ground, with a 3 1/4 in. alum. cap mkd. as shown:

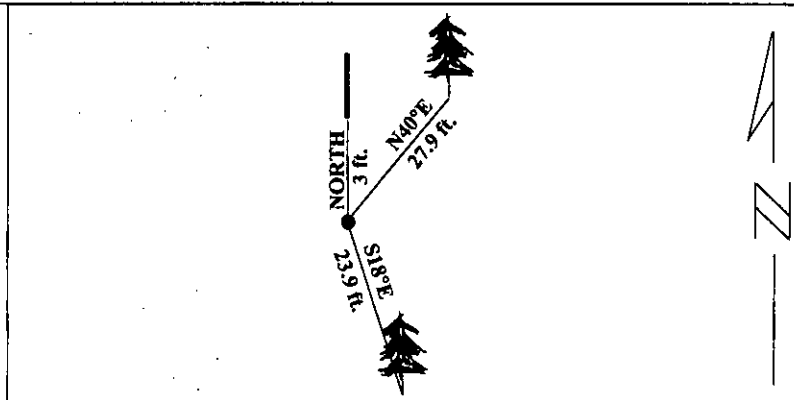


from which:

- A larch, 12 ins. diam., bears N40°E, 27.9 ft. dist., with a healed face.
A fir, 10 ins. diam., bears S18°E, 23.9 ft. dist., with visible scribing.
A steel guard post with LSM & PB decals affixed, 3 ft. N. of corner position.

Painted red bands around the bearing trees and attached Land Survey Monument and Bearing Tree signs.

Magnetic Declination: 20° East



SKETCH OF CORNER

CERTIFICATION

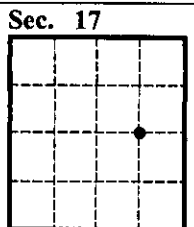
I. Rex O. Rice
certify the information shown herein is true and correct.
Rex O. Rice
Signature Ground Party Chief

I. Alvah F. Hughes
certify that this Corner Record correctly represents work performed by me or under my direction in compliance with the "Corner Recordation Act," (70-22-101, et seq., M.C.A.)
Alvah F. Hughes
Signature of Surveyor & Seal
Date: 01/22/96
Reg. No.: 7322LS
Employer: U.S. FOREST SERVICE

Office of Clerk and Recorder, County of LINCOLN. This "corner record" was filed for record on JULY 29, 1997 was noted on the cross-index plat and is assigned page No. 9736 in book No. CORAL M. CUMMINGS

County Official

By DLB



• - corner this sheet

Cross Index No. L-8

T. 31N R. 31W PMM