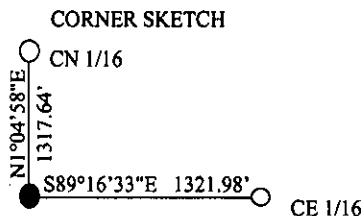
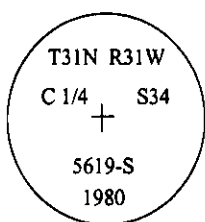


CERTIFIED CORNER RECORDATION

Corner C 1/4 **Sec.** 34 **T.** 31N **R.** 31W **P.M., MT** **Lincoln** **County**

I. 1980 U.S.F.S. Corner Recordation by Stephen D. Staab #5619-S: No previous history. Set a 2 1/2 in. diam., 30 in. long, alum. pipe in a collar of stone. Cap is mkd. as shown.



from which:

- A pine, 10 ins. diam., bears N46°E, 24.5 ft. dist., mkd. "C 1/4 S34 BT".
- A pine, 5 ins. diam., bears S41°W, 8.4 ft. dist., mkd. "X BT".
- A pine, 4 ins. diam., bears S68°W, 5.1 ft. dist., with location poster attached.

Set a guard post next to corner, with a "National Forest Boundary" sign attached.

II. Found a 2 1/2 in. diam. alum pipe, 4 ins. above ground, firmly set, with a 3 1/4 in. alum. cap mkd. as shown above, from which:

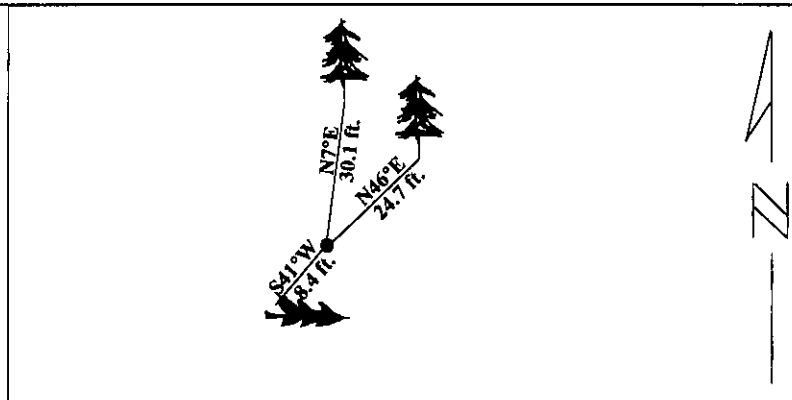
- A pine, 13 ins. diam., bears N46°E, 24.7 ft. dist., with a healed face.
- A fallen pine, 6 ins. diam., bears S41°W, 8.4 ft. dist., with visible scribing.

III. Established one new bearing tree:

- A pine, 10 ins. diam., bears N7°E, 30.1 ft. dist., scribed "C1/4 S34 BT".

Painted red bands around the bearing trees and attached Land Survey Monument and Bearing Tree signs.

Magnetic Declination: 20° East



SKETCH OF CORNER

CERTIFICATION
I. <u>Rex O. Rice</u> certify the information shown herein is true and correct. <i>Rex O. Rice</i> Signature Ground Party Chief
I. <u>Alvah F. Hughes</u> certify that this Corner Record correctly represents work performed by me or under my direction in compliance with the "Corner Recordation Act" (70-22-104, 61 Stat., M.C.A.) <i>Alvah F. Hughes</i> Signature of Surveyor & Seal
Date: <u>01/25/96</u>
Reg. No.: <u>7322LS</u>
Employer: <u>U.S. FOREST SERVICE</u>

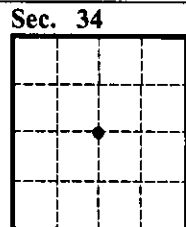
LINCOLN

Office of Clerk and Recorder, County of _____ This "corner record" was filed for record on **JULY 29, 1997** was noted on the cross-index plat and is assigned page No. **9734** in book No. _____

CORAL M. CUMMINGS

County Official

By DLB



● - corner this sheet