

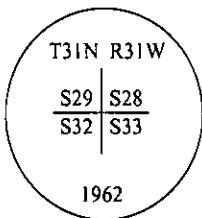
CERTIFIED CORNER RECORDATION

Corner SW Sec. Corner Sec. 28 T. 31N R. 31W P.M, MT Lincoln County

I. 1893 G.L.O. original record by Daniel P. Mumbrue: Set a post, from which:

- A pine, 12 ins. diam., bears N30 1/2°E, 65 lks. dist., mkd. "T31N R31W S28 BT".
- A pine, 20 ins. diam., bears S63 3/4°E, 129 lks. dist., mkd. "T31N R31W S33 BT".
- A pine, 12 ins. diam., bears S78°W, 76 lks. dist., mkd. "T31N R31W S32 BT".
- A pine, 20 ins. diam., bears N41 1/2°W, 53 lks. dist., mkd. "T31N R31W S29 BT".

1962 B.L.M. remonumentation record by G. F. Pittman, R. L. Larimer, and H. W. Grusing: The corner of secs. 28, 29, 32 and 33, as determined by the remains of two of the original bearing trees. At the corner point, set an iron post, 30 ins. long, 2 1/2 ins. diam., 26 ins. in the ground, with brass cap marked:



The remains of the original bearing trees:

- A stump, 16 ins. diam., bears S63 3/4°E, 129 lks. dist., with "BT" visible.
- A pine, 18 ins. diam., bears S78°W, 76 lks. dist., with an overgrown blaze.

Established 2 new bearing trees:

- A pine, 12 ins. diam., bears N70 1/2°E, 153 lks. dist., mkd "T31N R31W S28 BT".
- A pine, 12 ins. diam., bears S81°E, 134 lks. dist., mkd "T31N R31W S33 BT".

II. Found a B.L.M. brass cap, 3 1/4 ins. diam., firmly set flush with ground, mkd. as shown above, from which:

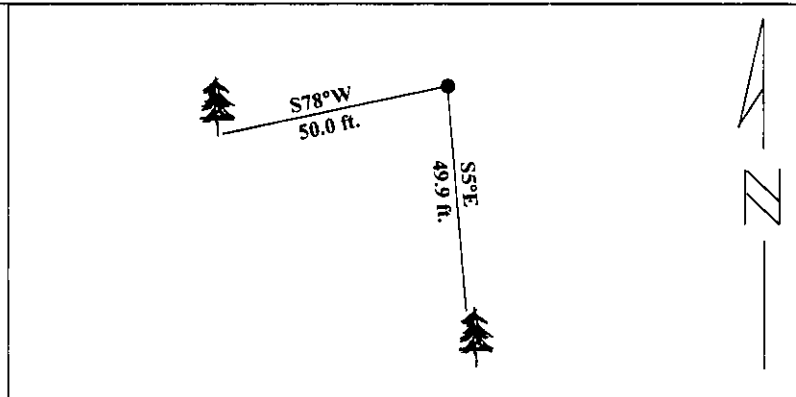
- A pine, 25 ins. diam., bears S78°W, 50.0 ft. (76 lks.) dist., with healed face. (G.L.O.)
- A steel post, bears West, 1.0 ft. dist., with a Land Survey Monument decal.

III. Established one new bearing tree:

- A pine, 18 ins. diam., bears S5°E, 49.9 ft. dist., mkd. "T31N R31W S33 BT".

Painted red bands around the bearing trees and attached Land Survey Monument and Bearing Tree signs.

Magnetic Declination: 20° East



SKETCH OF CORNER

CERTIFICATION	
I. Thomas M. Hommel	
certify the information shown herein is true and correct.	
<i>Thomas M. Hommel</i>	
Signature Ground Party Chief	
I. Alvah F Hughes	
certify that this Corner Record correctly represents work performed by me or under my direction in compliance with the "Corner Recordation Act" (70-22-101, et seq., M.C.A.)	
<i>Alvah F Hughes</i>	
Signature of Surveyor & Seal	
Date:	4/16/96
Reg. No.:	7322LS
Employer:	U.S. FOREST SERVICE

Office of Clerk and Recorder, County of **LINCOLN**. This "corner record" was filed for record on **JULY 29, 1997** was noted on the cross-index plat and is assigned page No. **9733** in book No. _____

CORAL M. CUMMINGS

County Official

By [Signature]

