

CERTIFIED CORNER RECORDATION

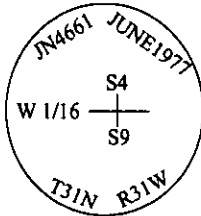
Corner W 1/16 Sec. 4&9 T. 31N R. 31W P.M., MT Lincoln County

I. 1977 Corner Recordation by J.H. Ninneman: Set a brass cap monument by J.H.N. 4661 S.-1977, from which:

A hemlock, 10 ins. diam., bears N57°E, ? ft. dist., mkd. "W 1/16 S4 BT".  
A larch, 12 ins. diam., bears S26°W, 12 ft. dist., mkd. "W 1/16 S9 BT".

1986 Corner Recordation by Thomas Hill #5612-S: Set a guard post, with a "Survey Marker" decal attached, 6 ft. W. from corner.

II. Found a 1 1/2 in. diam. iron pipe with a 2 1/2 in. brass cap, 4 ins. above ground, firmly set, and mkd. as shown.



from which:

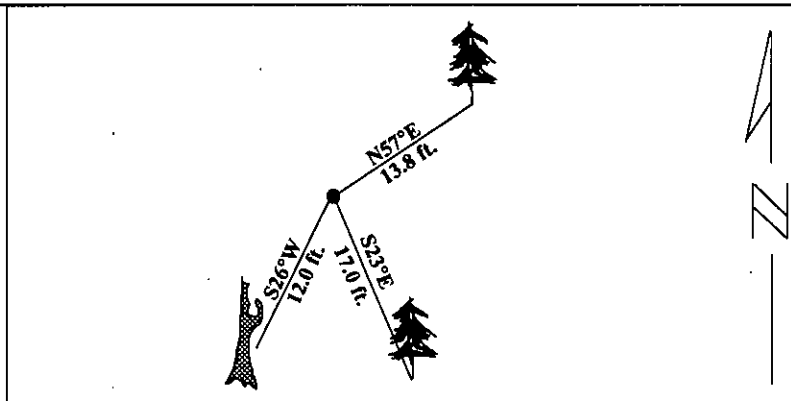
A hemlock, 13 ins. diam., bears N57°E, 13.8 ft. dist., with a healed face.  
A larch snag, 13 ins. diam., bears S26°W, 12.0 ft. dist., "S9 BT" visible.

III. Established one new bearing tree:

A fir, 13 ins. diam., bears S23°E, 17.0 ft. dist., mkd. "W 1/16 S9 BT".

Painted red bands around the bearing trees and attached Land Survey Monument and Bearing Tree signs.

Magnetic Declination: 20° East



SKETCH OF CORNER

CERTIFICATION

I, Rex O. Rice

certify the information shown herein is true and correct.

*Rex O. Rice*

Signature Ground Party Chief

I, Alvah F. Hughes

certify that this Corner Record correctly represents work performed by me or under my direction in compliance with the "Corner Recordation Act" (70-22-101, et seq., M.C.A.)

*Alvah F. Hughes*

Signature of Surveyor & Seal

Date: 01/22/96

Reg. No.: 7322LS

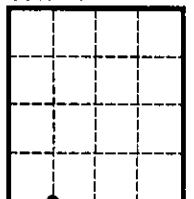
Employer: U.S. FOREST SERVICE

Office of Clerk and Recorder, County of LINCOLN. This "corner record" was filed for record on JULY 29, 1997 was noted on the cross-index plat and is assigned page No. 9732 in book No. CORAL M. CUMMINGS

County Official

*By ALB*

Sec. 4



• - corner this sheet

Cross Index No. E-10 T. 31N R. 31W PMM