

CERTIFIED CORNER RECORDATION

Corner S 1/16 Sec. 9&10 T. 31N R. 31W P.M., MT Lincoln County

I. 1981 Corner Recordation by Melvin D. Lauteren #4232-S: "I Set a 5/8 in. x 24 in. rebar, capped MDL 4232-S", from which:

A fir, 6 ins. diam., bears N36°W, 31.4 ft. distant.
A fir, 15 ins. diam., bears N45°E, 48.4 ft. distant.
Both trees scribed and tagged.

II. A 5/8 in. diam. rebar, firmly set, with a plastic cap mkd. as shown.

MDL
4232S

from which:

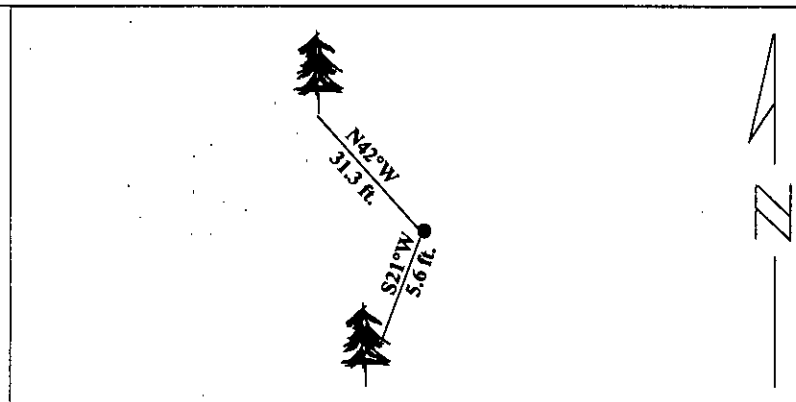
A fir, 8 ins. diam., bears N42°W, 31.3 ft. dist., visible scribing. (Rec:N36°W)
No other bearing tree found.

III. With no trees available in sec. 10, I establish one new bearing tree in sec. 9:

A larch, 8 ins. diam., bears S21°W°E, 5.6 ft. dist., mkd. "S 1/16 S9 BT".

Painted red bands around the bearing trees and attached Land Survey Monument and Bearing Tree signs.

Magnetic Declination: 20° East



SKETCH OF CORNER

CERTIFICATION

I, Rex O. Rice
certify the information shown herein is true and correct.

Rex O. Rice
Signature Ground Party Chief

I, Alvah F. Hughes
certify that this Corner Record correctly represents work performed by me or under my direction in compliance with the "Corner Recordation Act", (70-22-101, et seq., M.C.A.)

Alvah F. Hughes
Signature of Surveyor & Seal

Date: 01/23/96

Reg. No.: 7322LS

Employer: U.S. FOREST SERVICE

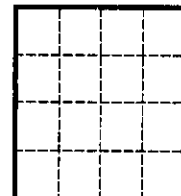
Office of Clerk and Recorder, County of LINCOLN This "corner record" was filed for record on JULY 29, 1997 was noted on the cross-index plat and is assigned page No. 9730 in book No. _____

CORAL M. CUMMINGS

County Official

By OLB

Sec. 9



• - corner this sheet

Cross Index No. H-13 T. 31N R. 31W PMM