

CERTIFIED CORNER RECORDATION

Corner SE 1/16 Sec. 31 T. 31N R. 31W P.M., MT Lincoln County

- I. 1987 Corner Recordation by Thomas Hill #5612-S: No record found. Found a 1 in. diam. iron pipe, 3 ins. above ground, bearing N49° 32'W, 6.6 ft. from the established corner position. The found iron pipe was used to establish property boundary location by St. Regis Lumber Company and is believed to be set by St. Regis Lumber Company. A Grand fir, 7 ins. diam., with a St. Regis location poster, bears S. 17.1 ft. dist. from the established corner position.

At the calculated subdivivional position, set an alum. rod, 3/4 ins. diam., 30 ins. long, 27 ins. in the ground, with a 3 1/4 in. diam. alum. cap mkd as shown:



Established two bearing trees:

- A fir, 6 ins. diam., bears S42°W, 22.4 ft. dist., mkd. "X BT".
A fir, 13 ins. diam., bears N81°EW, 94.0 ft. dist., mkd. "SE 1/16 S31 BT".

Set a guard post, with a "Survey Marker" decal attached, 2 ft. N. from corner.

- II. Found a 3/4 in. diam. alum. rod, 1 in. above ground, firmly set, with a 3 1/4 in. alum. cap, mkd as shown above, from which:

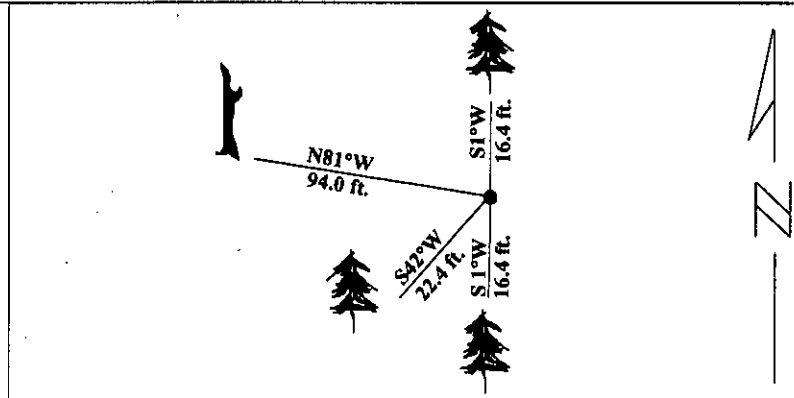
- A fir, 6 ins. diam., bears S42°W, 22.4 ft. dist., with visible scribe.
A fir snag, 13 ins. diam., bears N81°W, 94.0 ft. dist., no visible scribe.

- III. Established one new bearing tree:

- A fir, 10 ins. diam., bears S1°W, 16.4 ft. dist., mkd. "SE 1/16 S31 BT".

Painted red bands around the bearing trees and attached Land Survey Monument and Bearing Tree signs.

Magnetic Declination: 20° East



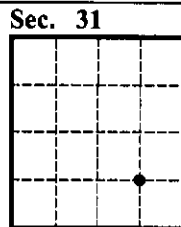
SKETCH OF CORNER

CERTIFICATION
I, Rex O. Rice
certify the information shown herein is true and correct.
Rex O. Rice
Signature Ground Party Chief
I, Alvah F. Hughes
certify that this Corner Record correctly represents work performed by me or under my direction in compliance with the "Corner Recordation Act" (70-22-101, et seq., M.C.A.)
Alvah F. Hughes
Signature of Surveyor
Date: 01/22/96
Reg. No.: 7322LS
Employer: U.S. FOREST SERVICE

Office of Clerk and Recorder, County of LINCOLN This "corner record" was filed for record on JULY 29, 1997 was noted on the cross-index plat and is assigned page No. 9728 in book No. _____

CORAL M. CUMMINGS
County Official

By OLB



• - corner this sheet