

CERTIFIED CORNER RECORDATION

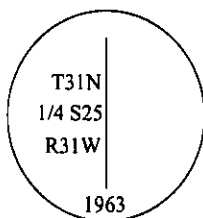
Corner E 1/4 Sec. 25 T. 31N R. 31W P.M., MT Lincoln County

- I. 1893 original G.L.O. record by Daniel P. Mumbrue: Set a granite stone 12x10x6 ins., 8 ins. in the ground for 1/4 sec. cor., marked 1/4 on W. face, from which:
A pine, 36 ins. diam., bears N63 3/4°E, 49 lks. dist., mkd. "1/4 S BT".
A pine, 10 ins. diam., bears N25°40'W, 25 lks. dist., mkd. "1/4 S BT".

1898 G.L.O. Retracement of the Libby Creek Guide Meridian by Paul S. A. Bickel: At this time the corners between T31N R30W sec. 30 and T31N R31W sec. 25 are no longer common. The original 1/4 corner now refers to sec. 25 only.

1963 B.L.M. remonumentation by Gerald F. Pittman: The 1/4 cor. of sec. 25, on the E bdy. of the Tp., monumented with an unmarked argillite stone, 16x10x6 ins., firmly set and witnessed by the remains of one of the original bearing trees.

At the corner point, set an iron post, 30 ins. long, 2 1/2 ins. diam., 26 ins. in the ground, with brass cap mkd.



From which:
The remains of the original bearing tree:

A stump, 16 ins. diam., bears N 27 1/2°W, 25 lks. dist., with visible marks 1/4 S. (Record: N 25 ° 40'W, 25 lks.)

The new bearing trees:

A pine, 10 ins. diam., bears S58°W, 39 lks. dist., mkd. "1/4 S25 BT".

A pine, 8 ins. diam., bears N49 1/2°W, 142 lks. dist., mkd. "X BT".

Bury the original stone alongside and raise a flat mound of stone, 3 ft. diam., around the iron post.

- II. Found a 3 1/4 in. brass Corps of Engineers cap, firmly set, 1 ft. underground, in the fill of a powerline road, mkd. as shown above, from which:

A high stump, bears East, 31.3 ft. (47.4 lks.) dist., mkd. with visible scribing. (No record found for this BT.)

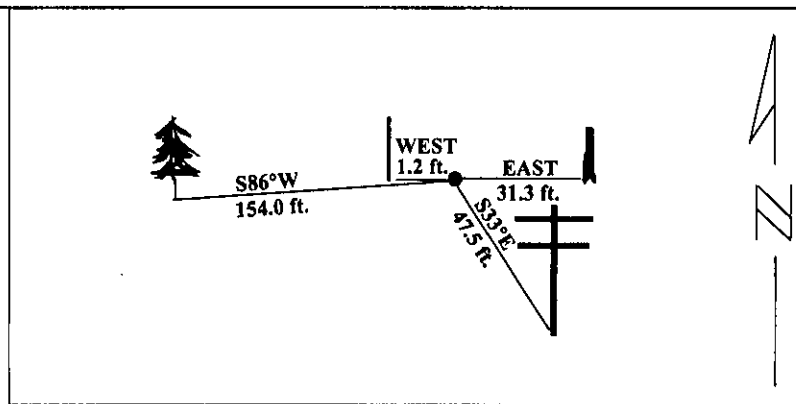
A galvanized steel guard post, 1.2 ft. W. of corner with LSM & PB decals affixed.

- III. Established two new bearing trees:

A power pole, 14 ins. diam., bears S33°E, 47.5 ft., mkd. "1/4 S BT". (This powerpole also references the W 1/4 cor. of sec. 30, T31N R30W.)

A pine, 12 ins. diam., bears S86°W, 154.0 ft. dist., mkd. "1/4 S25 BT".

Painted red bands around the bearing trees and attached Land Survey Monument and Bearing Tree signs.
Magnetic Declination: 20° East



SKETCH OF CORNER

CERTIFICATION

I. Rex O. Rice certify the information shown herein is true and correct.

Rex O. Rice
Signature Ground Party Chief

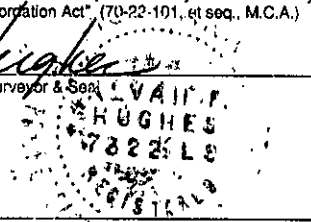
I. Alvah F. Hughes certify that this Corner Record correctly represents work performed by me or under my direction in compliance with the "Corner Recordation Act", (70-22-101, et seq., M.C.A.)

Alvah F. Hughes
Signature of Surveyor & Seal

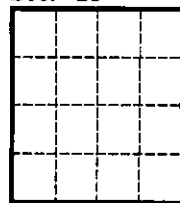
Date: 01/24/96

Reg. No.: 7322LS

Employer: U.S. FOREST SERVICE



Sec. 25



• - corner this sheet

Office of Clerk and Recorder, County of LINCOLN. This "corner record" was filed for record on JULY 29, 1997 was noted on the cross-index plat and is assigned page No. 9724 in book No. CORAL M. CUMMINGS

County Official

By DeB

Cross Index No. T-25 T. 31N R. 31W PMM