

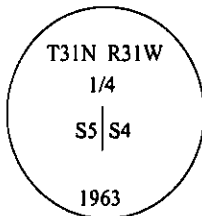
CERTIFIED CORNER RECORDATION

Corner W 1/4 Sec. 4 T. 31N R. 31W P.M., MT Lincoln County

I. 1913 G.L.O. original record: Set a stone and established two bearing trees.

1963 B.L.M. Remonumentation record: The 1/4 sec. cor. of secs. 4 and 5, monumented with a granite stone, 12x8x6 ins., firmly set and mkd. "1/4" on the W. face, and witnessed by one of the original bearing trees.

At the corner point, set an iron post, 30 ins. long, 2 1/2 ins. diam., 26 ins. in the ground, with a brass cap mkd. as shown



From which
The original bearing tree:

A pine, 25 ins. diam., bears N 73 1/2°E, 15 lks. dist., with visible marks 4 S4 B. (Record: N 53 1/2°E, 33 lks.)

The new bearing tree:

A pine, 12 ins. diam., bears S 83 3/4°W, 48 lks. dist., mkd. 1/4 S5 BT.

Bury the original stone alongside and raise a flat mound of stone, 3 ft. diam., around the iron pipe.

1986 Corner recordation by Thomas Hill # 5612-S: Found a B.L.M. monument, protruding 4 ins. above ground, with brass cap mkd. as described and one G.L.O. and one B.L.M. bearing tree.

Set a guard post with a "Survey Marker" decal attached, 2 ft. S. from corner.

II. Found a 2 1/2 in. diam. iron pipe, 4 ins. above ground, firmly set, with a 3 1/4 in. brass cap mkd. as shown above, from which:

A pine, 21 ins. diam., bears N76°E, 10.3 ft. dist., "S4" visible. (G.L.O. rec: Fir, 12 ins. diam., bears N52°30'E, 33 lks.)

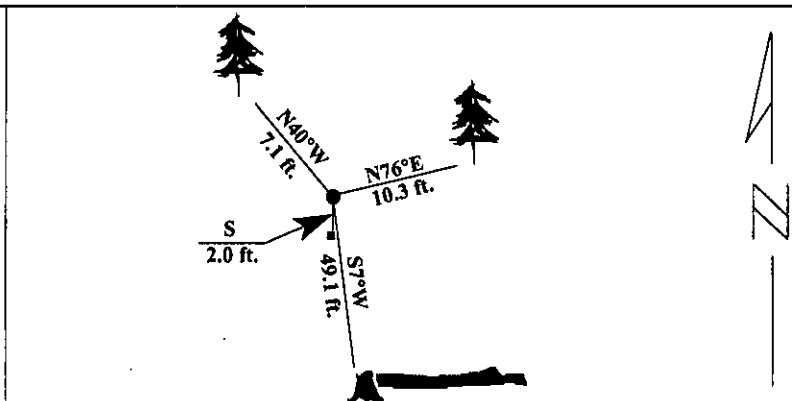
A fallen pine with stump, bears S7°W, 49.1 ft. dist., "BT" visible on stump. (B.L.M. rec. 31.7 ft.)

A guard post, 2 ft. S. of corner with LSM decal.

III. Established one new bearing tree:

A fir, 5 ins. diam., bears N40°W, 7.1 ft. dist., mkd. "BT" on face, and "X" on a snowblaze.

Painted red bands around the bearing trees and attached Land Survey Monument and Bearing Tree signs.
Magnetic Declination: 20° East



SKETCH OF CORNER

CERTIFICATION

I, Rex O. Rice
certify the information shown herein is true and correct.

Rex O. Rice
Signature Ground Party Chief

I, Alvah F. Hughes
certify that this Corner Record correctly represents work performed by me or under my direction in compliance with the "Corner Recordation Act" (70-22-101; et seq., M.C.A.)

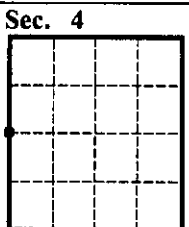
Alvah F. Hughes
Signature of Surveyor & Seal

Date: 01/22/96

Reg. No.: 7322LS

Employer: U.S. FOREST SERVICE

Office of Clerk and Recorder, County of LINCOLN. This "corner record" was filed for record on JULY 29, 1997 was noted on the cross-index plat and is assigned page No. 9721, in book No. CORAL M. CUMMINGS By RLB
County Official



• - corner this sheet