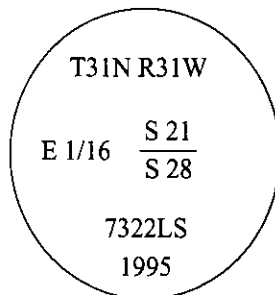


CERTIFIED CORNER RECORDATION

Corner E 1/16 Sec. 21 & 28 T. 31 N R. 31 W P.M., MT Lincoln County

- I. No previous history.
- II. No evidence found.
- III. At the position determined by survey, set a 30 in. long, 3/4 in. diam. alum. rod, 29 ins. in the ground, with a 3 1/4 in. diam. alum. cap mkd. as shown:



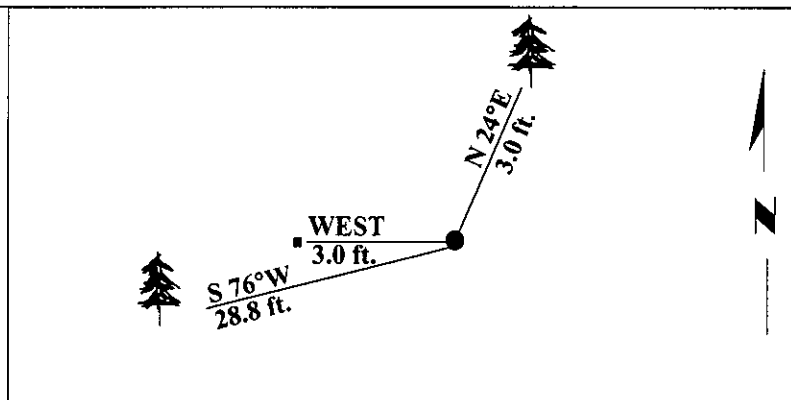
from which:

- A fir, 10 ins. diam., bears N 24°E, 3.0 ft. dist., mkd. E 1/16 S21 BT.
- A fir, 8 ins. diam., bears S 76°W, 28.8 ft. dist., mkd. E 1/16 S28 BT.

Painted bearing trees and attached Land Survey Monument and Bearing Tree signs.

Set a 6 ft. steel guard post with Land Survey Monument and Property Boundary decals, West, 3.0 ft. dist. from the corner.

Magnetic Declination: 20° East.



SKETCH OF CORNER

CERTIFICATION	
I. <u>Mark Federman</u> certify the information shown herein is true and correct.	
II. <u>Alvah F. Hughes</u> certify that this Corner Record correctly represents work performed by me, or under my direction in compliance with the "Corner Recordation Act" (70-22-101, et seq., M.C.A.)	
Signature of Surveyor	<u>Alvah F. Hughes</u>
Date:	<u>2/16/96</u>
Reg. No.:	<u>7322LS</u>
Employer:	<u>U.S. FOREST SERVICE</u>

Office of Clerk and Recorder, County of LINCOLN. This "corner record" was filed for record on JULY 29, 1997 was noted on the cross-index plat and is assigned page No. 9720 in book No. CORAL M. CUMMINGS

County Official By ALB

