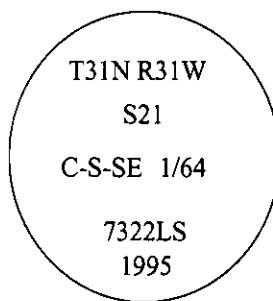


CERTIFIED CORNER RECORDATION

Corner C S SE 1/64 Sec. 21 T. 31 N R. 31 W P.M., MT Lincoln County

- I. No previous history.
- II. No evidence found.
- III. At the position determined by survey, set a 30 in. long, 3/4 in. diam. alum. rod, 29 ins. in the ground with a 3 1/4 in. diam. alum. cap, mkd. as shown below:



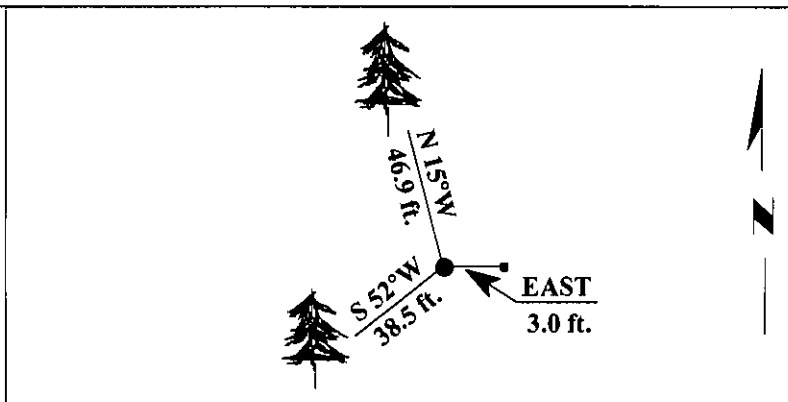
from which:

A pine, 12 ins. diam., bears S 52° W, 38.5 ft. dist., mkd. C S SE 1/64 S21 BT.
A pine, 11 ins. diam., bears N 15° W, 46.9 ft. dist., mkd. C S SE 1/64 S21 BT.

Painted bearing trees and attached Land Survey Monument and Bearing Tree signs.

Set a 6 ft. steel guard post with Land Survey Monument and Property Boundary decals, East, 3.0 ft. dist. from the corner.

Magnetic Declination: 20° East.



SKETCH OF CORNER

CERTIFICATION

I. Mark Federman
certify the information shown herein is true and correct.

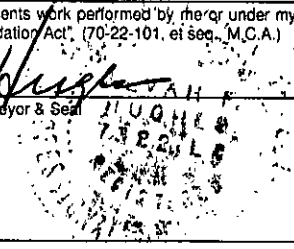
ii. Alvah F. Hughes
certify that this Corner Record correctly represents work performed by me or under my direction in compliance with the "Corner Recordation Act", (70-22-101, et seq., M.C.A.)

Date: 3/14/96

Reg. No.: 7322LS

Employer: U.S. FOREST SERVICE

Signature of Surveyor & Seal

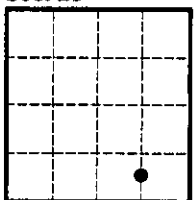


Office of Clerk and Recorder, County of LINCOLN. This "corner record" was filed for record on JULY 29, 1997 was noted on the cross-index plat and is assigned page No. 9719 in book No. _____

CORAL M. CUMMINGS

County Official

Sec. 21



● - corner this sheet

Cross Index No. Q.5-12

31N R. 31W P.M., MT