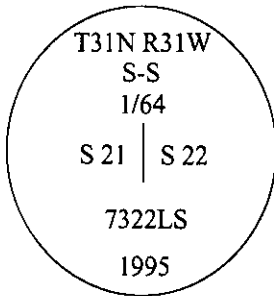


# CERTIFIED CORNER RECORDATION

Corner S-S 1/64 Sec. 21 & 22 T. 31 N R. 31 W P.M., MT Lincoln County

- I. No previous history.
- II. No evidence found.
- III. At the position determined by survey, set a 30 in. long, 3/4 in. diam. alum. rod, 29 ins. in the ground, with a 3 1/4 in. diam. alum. cap mkd. as shown:



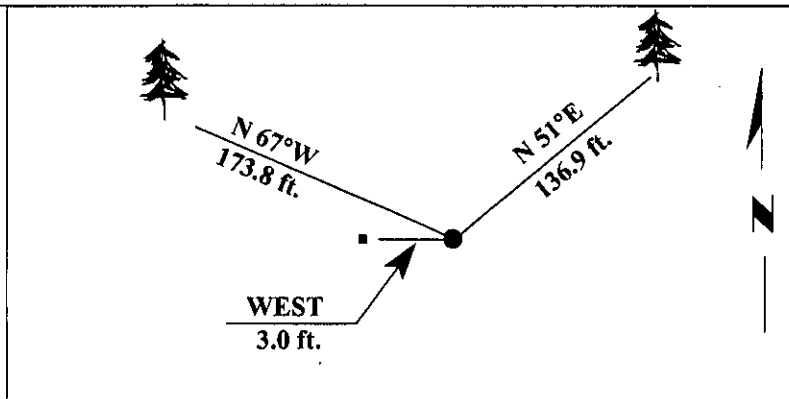
from which: .....

A fir, 11 ins. diam., bears N 51°E, 136.9 ft. dist., mkd. S S 1/64 S22 BT.  
 A larch, 14 ins. diam., bears N 67°W, 173.8 ft. dist., mkd. S S 1/64 S22 BT.

Painted bearing trees and attached Land Survey Monument and Bearing Tree signs.

Set a 6 ft. steel guard post with Land Survey Monument and Property Boundary decals, West, 3.0 ft. dist. from the corner.

Magnetic Declination: 20° East.



**SKETCH OF CORNER**

CERTIFICATION
I. <u>Mark Federman</u> certify the information shown herein is true and correct.
ii. <u>Alvah F. Hughes</u> certify that this Corner Record correctly represents work performed by me or under my direction in compliance with the "Corner Recordation Act" (70-22-104, et seq., M.C.A.). <i>Alvah F. Hughes</i> Signature of Surveyor & Seal
Date: <u>2/16/96</u>
Reg. No.: <u>7322LS</u>
Employer: <u>U.S. FOREST SERVICE</u>

Office of Clerk and Recorder, County of LINCOLN. This "corner record" was filed for record on JULY 29, 1997, was noted on the cross-index plat and is assigned page No. 9716 in book No. \_\_\_\_\_

**CORAL M. CUMMINGS** *By DeB*  
County Official

