

# CERTIFIED CORNER RECORDATION

Corner 1/4 Sec. 27 & 28 T. 31N R. 31W P.M., MT Lincoln County

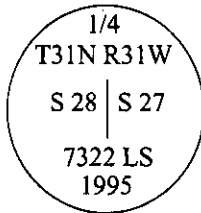
I. 1893 original G.L.O. record by Daniel P. Munbubroe: Set a post, 3 ft. long, 3 ins. square, 24 ins. in the ground, for 1/4 Sec. Cor., marked 1/4 S on W face, from which:

A tamarack, 24 ins. diam., bears N 56 1/2°E, 30 lks dist., mkd. 1/4 S BT.  
A tamarack, 36 ins. diam., bears N 5 1/2°W, 38 lks dist., mkd. 1/4 S BT.

II. No evidence of the original post was found. The following stumps were measured from the position for the 1/4 cor. as determined by survey.

A rotten stump, bears N 3°W, 26.7 ft. (40.4 lks.) dist., with no visible marks.  
A burnt stump, bears N 62°E, 21.7 ft. (23.9 lks.) dist., with no visible marks.

III. At the position determined by survey, set a 2 1/2 in. diam. X 30 in. aluminum pipe, 27 ins. in the ground, with a 3 1/4 in. diam. aluminum cap mkd. as shown.



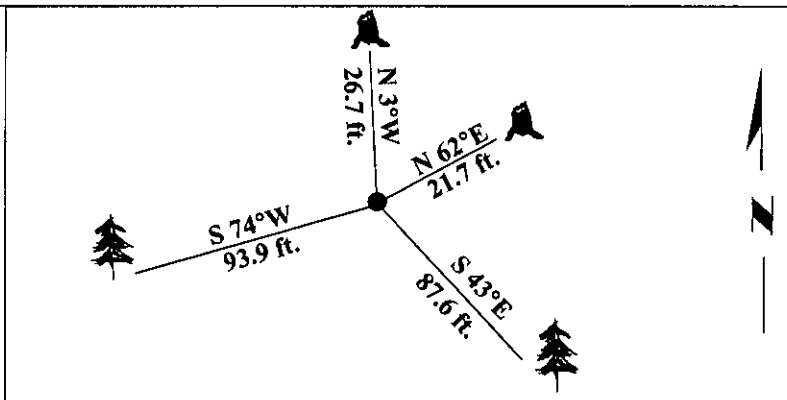
From which the new bearing trees:

A larch, 15 ins. diam., bears S 43°E, 87.6 ft. dist., mkd. 1/4 S 27 BT.  
A larch, 13 ins. diam., bears S 74°W, 93.9 ft. dist., mkd. 1/4 S 28 BT.

Painted bearing trees and attached Land Survey Monument and Bearing Tree signs.

Set a 6 ft. galvanized steel guard post with a Land Survey Monument decal attached, North. 3.0 ft. dist. from the corner.

Magnetic Declination: 20° East.

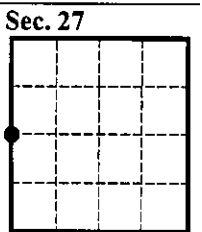


SKETCH OF CORNER

CERTIFICATION	
I. <u>Mark Allen Federman</u>	certify the information shown herein is true and correct.
II. <u>Alvah F. Hughes</u>	certify that this Corner Record correctly represents work performed by me or, under my direction in compliance with the "Corner Recordation Act" (70-22-101, et seq., M.C.A.).
<i>Alvah F. Hughes</i> Signature of Surveyor & Seal	
Date: <u>4/11/95</u>	Reg. No.: <u>7322LS</u>
Employer: <u>U.S. FOREST SERVICE</u>	

Office of Clerk and Recorder, County of LINCOLN. This "corner record" was filed for record on JULY 29, 1997 was noted on the cross-index plat and is assigned page No. 9715 in book No. CORAL M. CUMMINGS

County Official



• - corner this sheet