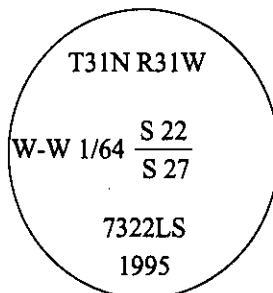


CERTIFIED CORNER RECORDATION

Corner W- W 1/64 Sec. 22 & 27 T. 31 N R. 31 W P.M., MT Lincoln County

- I. No previous history.
- II. No evidence found.
- III. At the position determined by survey, set a 30 in. long, 3/4 in. diam. alum. rod, 29 ins. in the ground, with a 3 1/4 in. diam. alum. cap mkd. as shown:



from which:

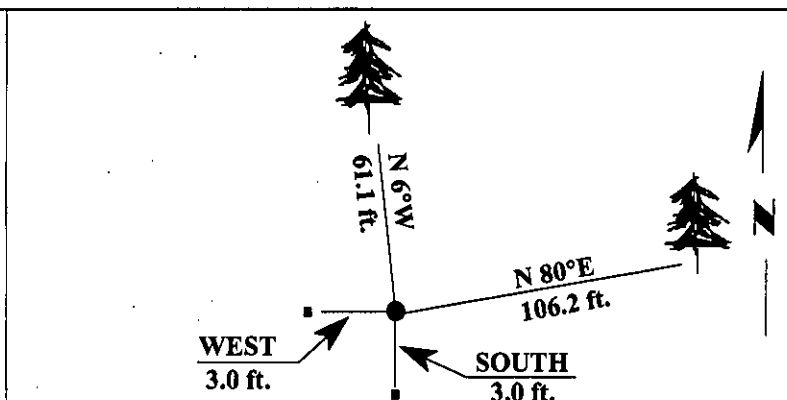
- A fir, 18 ins. diam., bears N 80°E, 106.2 ft. dist., mkd. W-W 1/64 S22 BT.
- A fir, 15 ins. diam., bears N 6°W, 61.1 ft. dist., mkd. W-W 1/64 S27 BT.

Painted bearing trees and attached Land Survey Monument and Bearing Tree signs.

Set a 6 ft. steel guard post with Land Survey Monument and Property Boundary decals, South, 3.0 ft. dist. from corner.

Set a 6 ft. steel guard post with Land Survey Monument and Property Boundary decals, West, 3.0 ft. dist. from corner.

Magnetic Declination: 20° East.



SKETCH OF CORNER

CERTIFICATION

I, Mark Federman

certify the information shown herein is true and correct.

II, Alvah F. Hughes

certify that this Corner Record correctly represents work performed by me or under my direction in compliance with the "Corner Recordation Act" (70-22-101, et seq., M.C.A.)

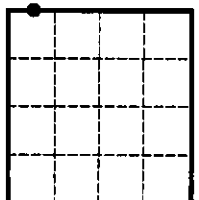
Alvah F. Hughes
Signature of Surveyor & Seal

Date: 2/16/96

Reg. No.: 7322LS

Employer: U.S. FOREST SERVICE

Sec. 27



• - corner this sheet

Office of Clerk and Recorder, County of LINCOLN. This "corner record" was filed for record on JULY 29, 1997 was noted on the cross-index plat and is assigned page No. 9711 in book No. _____

CORAL M. CUMMINGS

County Official

By D.C.B.

Cross Index No. R 13.5-06 T. 31N R. 31W P.M., MT

Adopted July 1, 1981, Montana Board of Professional Engineers & Land Surveyors