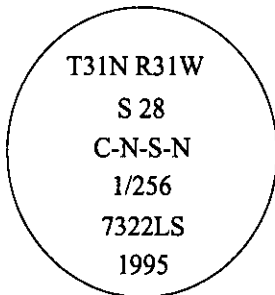


CERTIFIED CORNER RECORDATION

Corner C-N-S-N 1/256 Sec. 21 & 28 T. 31 N R. 31 W P.M., MT Lincoln County

- I. No previous history.
- II. No evidence found.
- III. At the position determined by survey, set a 30 in. long, 3/4 in. diam. alum. rod, 29 ins. in the ground, with a 3 1/4 in. diam. alum. cap mkd. as shown:



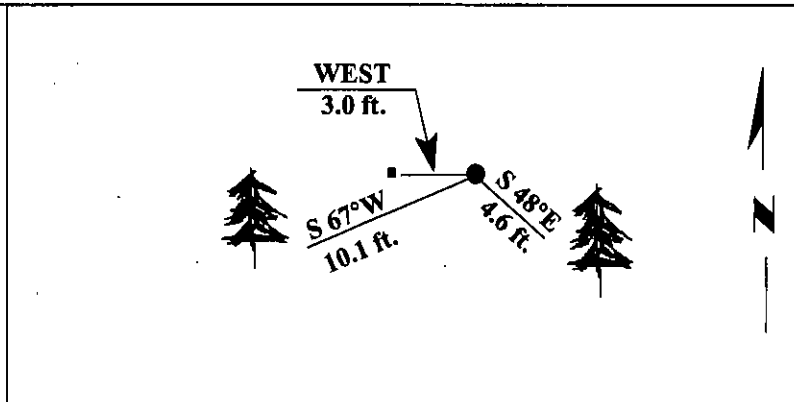
from which:

A pine, 12 ins. diam., bears S 48°E, 4.6 ft. dist., mkd. C N S N 1/256 S28 BT.
A larch, 16 ins. diam., bears S 67°W, 10.1 ft. dist., mkd. C N S N 1/256 S28 BT.

Painted bearing trees and attached Land Survey Monument and Bearing Tree signs.

Set a 6 ft. steel guard post with Land Survey Monument and Property Boundary decals, West, 3.0 ft. dist. from the corner.

Magnetic Declination: 20° East.



SKETCH OF CORNER

CERTIFICATION

I, Mark Federman
certify the information shown herein is true and correct.

II, Alvah F. Hughes
certify that this Corner Record correctly represents work performed by me or under my direction in compliance with the "Corner Recordation Act" (70-22-101, et seq., M.C.A.).

Alvah F. Hughes
Signature of Surveyor & Seal

Date: 2/16/96

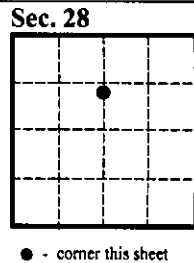
Reg. No.: 7322LS

Employer: U.S. FOREST SERVICE

Office of Clerk and Recorder, County of LINCOLN. This "corner record" was filed for record on JULY 29, 1997 was noted on the cross-index plat and is assigned page No. 9710 in book No. CORAL M. CUMMINGS

County Official

By [Signature]



• - corner this sheet

Cross Index No. S.25-11 T. 31N R. 31W P.M., MT