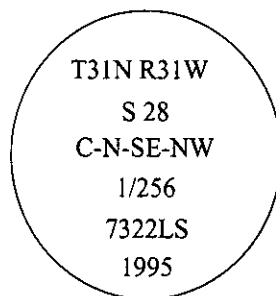


CERTIFIED CORNER RECORDATION

Corner C-N-SE-NW Sec. 28 T. 31 N R. 31 W P.M., MT Lincoln County
1/256

- I. No previous history.
- II. No evidence found.
- III. At the position determined by survey, set a 30 in. long, 3/4 in. diam. alum. rod, 29 ins. in the ground, with a 3 1/4 in. diam. alum. cap mkd. as shown:



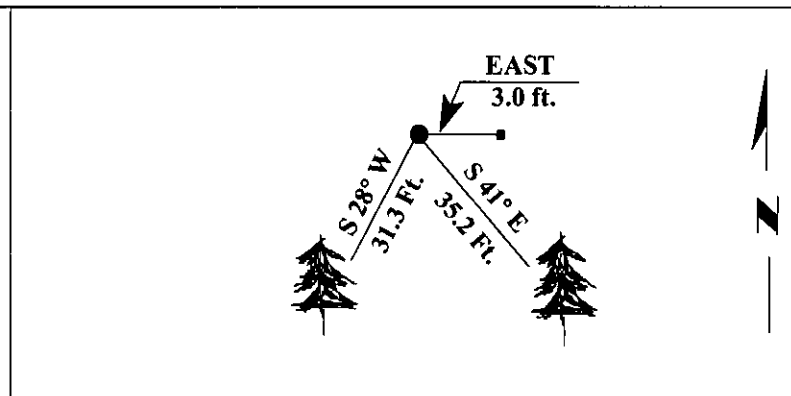
from which:

- A pine, 12 ins. diam., bears S 41°E, 35.2 ft. dist., mkd. C N SE NW 1/256 S28 BT.
- A pine, 12 ins. diam., bears S 28°W, 31.3 ft. dist., mkd. C N SE NW 1/256 S28 BT.

Painted bearing trees and attached Land Survey Monument and Bearing Tree signs.

Set a 6 ft. steel guard post with Land Survey Monument and Property Boundary decals, East, 3.0 ft. dist. from the corner.

Magnetic Declination: 20° East.



SKETCH OF CORNER

CERTIFICATION	
I. <u>Mark Federman</u>	certify the information shown herein is true and correct.
II. <u>Alvah F. Hughes</u>	
certify that this Corner Record correctly represents work performed by me or under my direction in compliance with the "Corner Recordation Act", (70-22-801, et seq., M.C.A.)	
<i>Alvah F. Hughes</i> Signature of Surveyor & Seal	
Date:	<u>3/14/96</u>
Reg. No.:	<u>7322LS</u>
Employer:	<u>U.S. FOREST SERVICE</u>

Office of Clerk and Recorder, County of LINCOLN. This "corner record" was filed for record on JULY 29, 1997 was noted on the cross-index plat and is assigned page No. 9709 in book No. CORAL M. CUMMINGS

County Official *By sub*

