

CERTIFIED CORNER RECORDATION

Corner 1/4 Sec. 21 & 22 T. 31N R. 31W P.M., MT Lincoln County

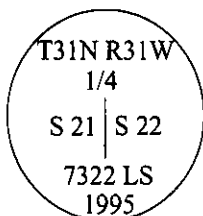
I. 1893 original G.L.O. record by Daniel P. Munbubroe: Set a post, 3 ft. long, 3 ins. square, 24 ins. in the ground, for 1/4 Sec. Cor., marked 1/4 S on W face, from which:

A pine, 12 ins. diam., bears S 80 1/4°E, 32 lks dist., mkd. 1/4 S BT.

A pine, 14 ins. diam., bears N 48°W, 43 lks dist., mkd. 1/4 S BT.

II. No original evidence found.

III. At the position determined by survey, set a 2 1/2 in. diam. X 30 in. aluminum pipe, 25 ins. in the ground, with a 3 1/4 in. diam. aluminum cap mkd. as shown.



From which the new bearing trees:

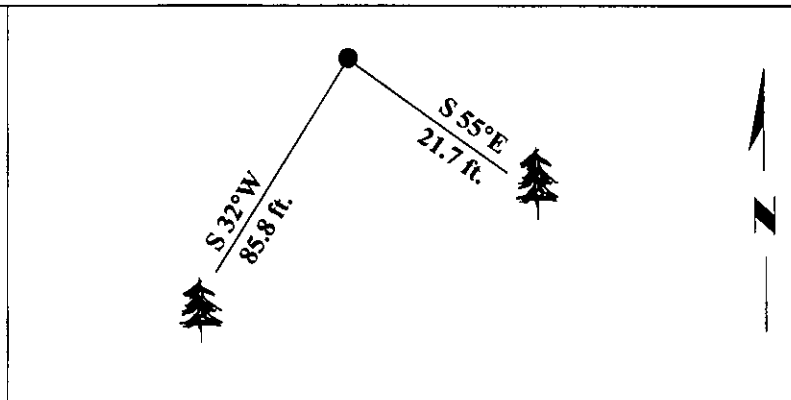
A pine, 4 ins. diam., bears S 55°E, 21.7 ft. dist., mkd. X BT.

A pine, 6 ins. diam., bears S 32°W, 85.8 ft. dist., mkd. 1/4 S 21 BT.

Painted bearing trees and attached Land Survey Monument and Bearing Tree signs.

Set a 6 ft. galvanized steel guard post with a Land Survey Monument decal attached, East. 3.0 ft. dist. from the corner.

Magnetic Declination: 20° East.



SKETCH OF CORNER

CERTIFICATION

I. Rex Owen Rice certify the information shown herein is true and correct.

II. Alvah F. Hughes certify that this Corner Record correctly represents work performed by me or under my direction in compliance with the "Corner Recordation Act" (70-22-101, M.C.A.).

Date: 4/11/95 Reg. No.: 7322LS Employer: U.S. FOREST SERVICE

Office of Clerk and Recorder, County of LINCOLN. This "corner record" was filed for record on JULY 29, 1997 was noted on the cross-index plat and is assigned page No. 9706 in book No. CORAL M. CUMMINGS County Official

