

CERTIFIED CORNER RECORDATION

Corner 1/4 Sec. 22 & 27 T. 31N R. 31W P.M., MT Lincoln County

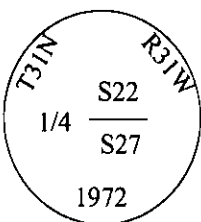
I. 1893 original G.L.O. record by Daniel P. Munbubroe: Set post and marked two bearing trees.

1972 remonumentation B.L.M. record by Gerald F. Pittman, Richard L. Larimer, and Harold W. Grusing: The 1/4 cor. of secs. 22 and 27, as determined from the remains of the original bearing trees:

A pine stump, 18 ins. diam., bears S 64 1/4°W, 59 lks dist., mkd. B.
A larch stump, 16 ins. diam., bears N 36°W, 43 lks, dist., mkd. 1/4 S BT.

At the corner point

Set an iron post, 30 ins. long, 2 1/2 ins. diam., 24 ins. in the ground, with brass cap mkd.:



from which new bearing trees:

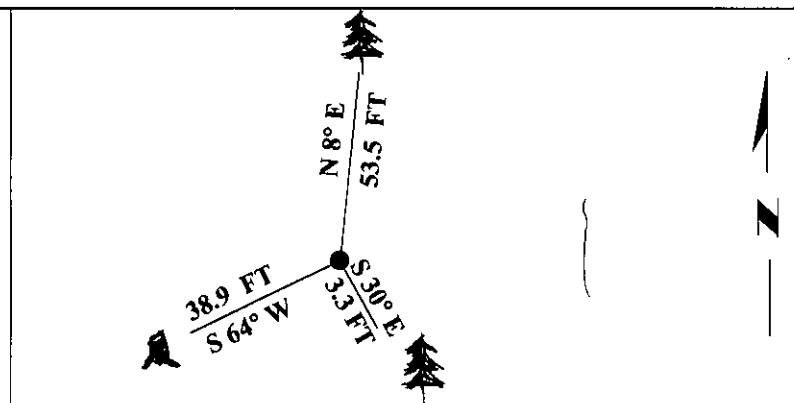
A larch, 6 ins. diam., bears N 8°E, 81 lks. dist., mkd. 1/4 S22 BT.
A fir, 14 ins. diam., bears S 30°E, 5 lks. dist., mkd. 1/4 S27 BT.

II. Found a 2 1/2 in. diam. iron pipe, firmly set, 8 ins. above ground, with a B. L. M. brass cap marked as shown above, from which:

A larch, 9 ins. diam., bears N 8°E, 53.5 ft. (81 lks.) dist., with a healed face.
A fir, 16 ins. diam., bears S30°E, 3.3 ft. (5 lks.) dist., with a healed face.
A rotten stump, bears S 64°W, 38.9 ft. (59 lks.) dist., with BT visible.

III. Painted bearing trees and attached Land Survey Monument and Bearing Tree signs.

Magnetic Declination: 20° East.



SKETCH OF CORNER

CERTIFICATION

I. Rex O. Rice
certify the information shown herein is true and correct.

II. Alvah F. Hughes
certify that this Corner Record correctly represents work performed by me or under my direction in compliance with the "Corner Recordation Act" (70-22-101, et seq., M.C.A.)

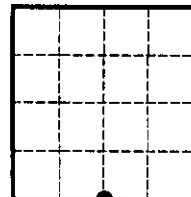
Alvah F. Hughes
Signature of Surveyor Seal

Date: 12/07/95

Reg. No.: 7322LS

Employer: U.S. FOREST SERVICE

Sec. 22



• - corner this sheet

Office of Clerk and Recorder, County of LINCOLN. This "corner record" was filed for record

on JULY 29, 1997 was noted on the cross-index plat and is assigned page No. 9705

in book No. _____

CORAL M. CUMMINGS

County Official