

CERTIFIED CORNER RECORDATION

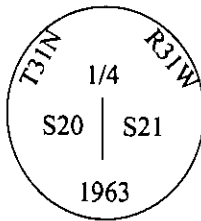
Corner **1/4** **Sec. 20 & 21** **T. 31N** **R. 31W** **P.M., MT** **Lincoln** **County**

I. 1893 G.L.O. original record by Daniel P. Munbubroe: Set post and marked two bearing trees.

1963 B.L.M. Remonumentation record by Gerald F. Pittman et al: The 1/4 sec. cor. of sec. 20 and 21, as determined from the remains of the original bearing trees:

At the corner point

Set an iron post, 30 ins. long, 2 1/2 ins. in the ground, with brass cap, mkd.



from which:

A pine, 21 ins. diam., bears S 74°E, 17 lks dist., with illegible marks. (Record: S 76°E, 17 lks.)
 A pine, 21 ins. diam., bears S 41 1/4°W, 66 lks, dist., visible marks BT.

II. Found a 2 1/2 diam. iron pipe, firmly set, 4 ins. above the ground, with a 3 1/4 in. diam. B. L. M. brass cap marked as shown above:

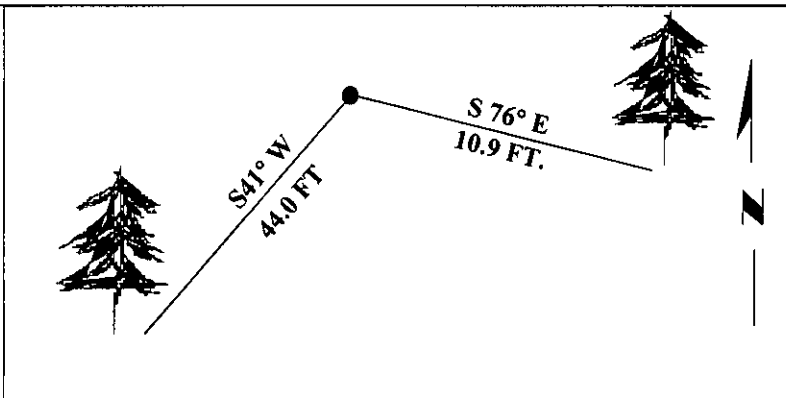
from which:

A pine, 22 ins. diam., bears S 76°E, 10.9 ft. dist. (16.5 lks.), BT visible.
 A pine, 21 ins. diam., bears S 41°W, 44 ft. dist. (66.7 lks.), BT with healed face.

III. Painted bearing trees and attached Land Survey Monument and Bearing Tree signs.

Set a 6 ft. galvanized steel guard post with a Property Boundary decal, South, 3.0 ft.

Magnetic Declination: 20° East.



SKETCH OF CORNER

CERTIFICATION	
I, <u>Rex O. Rice</u>	
certify the information shown herein is true and correct.	
_____ Signature Ground Party Chief	
I, <u>Alvah F. Hughes</u>	
certify that this Corner Record correctly represents work performed by me or under my direction in compliance with the "Corner Recordation Act" (70:22-101, et seq., M.C.A.)	
_____ Signature of Surveyor & Seal	
Date:	<u>12/18/95</u>
Reg. No.:	<u>7322LS</u>
Employer:	<u>U.S. FOREST SERVICE</u>

Office of Clerk and Recorder, County of LINCOLN. This "corner record" was filed for record on JULY 29, 1997 was noted on the cross-index plat and is assigned page No. 9704 in book No. _____

CORAL M. CUMMINGS
County Official *By ALB*

