

**CERTIFIED LAND CORNER RECORDATION**

DESCRIPTION OF CORNER EVIDENCE FOUND, AND ORIGINAL RECORD (IF KNOWN)

Section 33 Twp. 31 N., R. 31 W., M.P.M.  
 NW corner, SW corner, SE corner and E 1/4 corner are all brass cap monuments.  
 The west 1/4 corner has been replaced with a pipe. The S 1/2 corner fell in the  
 County Road along the Township line and has long been missing.

DESCRIPTION OF MONUMENT AND ACCESSORIES ESTABLISHED  
 TO PERPETUATE THE ORIGINAL LOCATION OF THIS CORNER:

A steel rod was set in a fence row at the NE corner of the NW 1/4 SW 1/4 SW 1/4 Section 33 Twp. 31 N., R. 31 W., M.P.M., and at a point 20 feet east of the NW corner of the said NW 1/4 SW 1/4 SW 1/4. No bearing trees in limits.

Date of work: 1967

See other side

SKETCH, WITH COURSE AND DISTANCE TO ADJACENT CORNERS IF DETERMINED IN THIS SURVEY.  
 (MAY SKETCH OR PASTE REPRODUCTION ON REVERSE SIDE.)

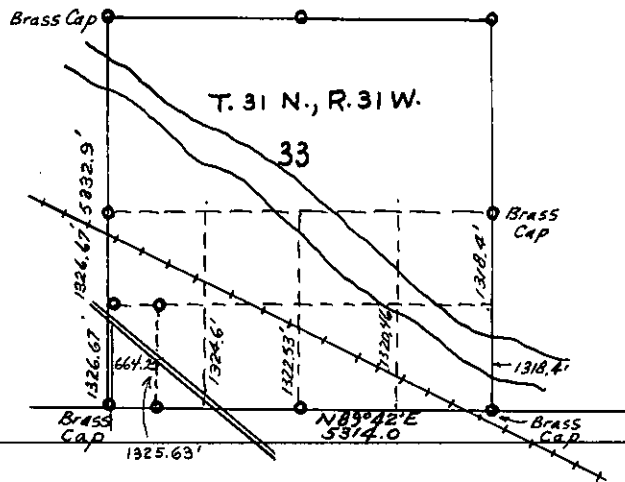
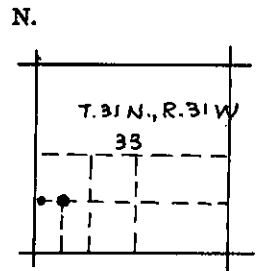


DIAGRAM OF CORNER:



● = Corner recorded on the sheet

Surveyor's Seal

I, J.W. Ninneman  
 certify that the information shown herein is true and correct.

*J.W. Ninneman*  
 Signature of Ground Party Chief

I, J.W. Ninneman  
 certify that I have carefully performed or reviewed the work done on the diagrammed corner as reported on this recordation form and approve the same.

*J.W. Ninneman*  
 Signature of Surveyor

534 ES  
 Registration Number

Office of Clerk and Recorder, County of Lincoln

This "corner record" was filed for record on the 11th. day of March 1968, was noted on the cross-index plat and is assigned page No. 93, in book No. 1

ELEANOR L. VAUGHN, *Max Kater*  
 County Official Deputy

