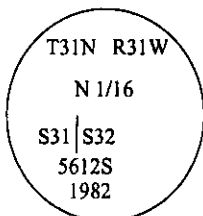


# CERTIFIED CORNER RECORDATION

**Corner N 1/16 Sec. 31&32 T. 31N R. 31W P.M., MT Lincoln County**

I. 1982 Corner Recordation by Thomas C. Hill # 5612-S: Set a 2 1/2 in. diam., 30 in. long alum. pipe, 26 ins. in the ground, with alum. cap mkd. as shown.



from which:

A fir, 10 ins. diam., bears N87°E, 24.4 ft. dist., mkd. "N 1/16 S32 BT".  
 A fir, 16 ins. diam., bears S60°W, 22.9 ft. dist., mkd. "N 1/16 S31 BT".

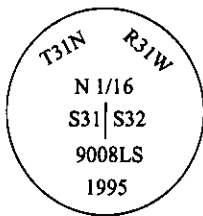
A collar of stone around monument. Location poster attached to a 3 in. fir, bears S86°W, 7.2 ft. distant.

II. Found the two orig. bearing trees :

A fir, 11 ins. diam., with visible scribing.  
 A fir, 16 ins. diam., with visible scribing.

The corner monument was removed during road construction.

III. Set by dist.-dist. intersect from faces of found bearing trees, a 3/4 in. diam., 30 in. long, alum. rod, 18 ins. in the ground, with a 3/4 in. alum. cap mkd. as shown.

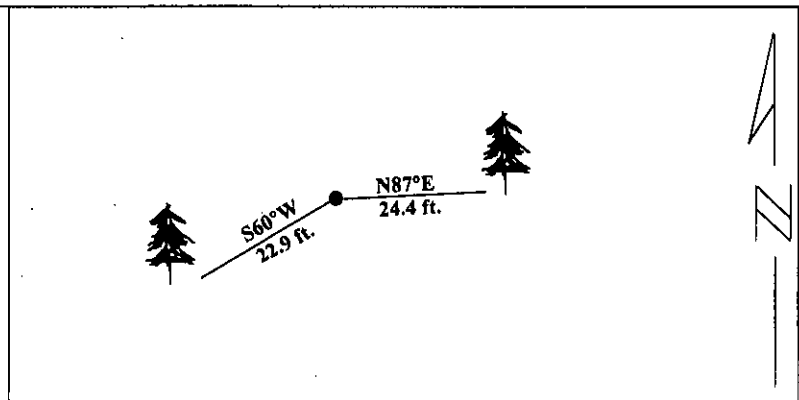


from which:

A fir, 11 ins. diam., bears N87°E, 24.4 ft. dist., mkd. "N 1/16 S32 BT".  
 A fir, 16 ins. diam., bears S60°W, 22.9 ft. dist., mkd. "N 1/16 S31 BT".

Painted red bands around the bearing trees and attached Land Survey Monument and Bearing Tree signs.

Magnetic Declination: 20° East



**SKETCH OF CORNER**

CERTIFICATION

I, Rex O. Rice  
 certify the information shown herein is true and correct.

Rex O. Rice  
 Signature Ground Party Chief

I, Ronald A. Pearson  
 certify that this Corner Record correctly represents work performed by me or under my direction in compliance with the "Corner Recordation Act" (70-22-101, et seq., M.C.A.)

Ronald A. Pearson  
 Signature of Surveyor & Seal

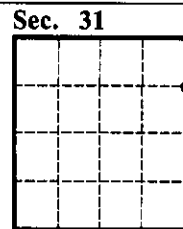
Date: 01/23/96

Reg. No.: 9008LS

Employer: U.S. FOREST SERVICE

Office of Clerk and Recorder, County of LINCOLN. This "corner record" was filed for record on FEB 20, 1997 was noted on the cross-index plat and is assigned page No. 9233 in book No. \_\_\_\_\_

CORAL M. CUMMINGS  
 County Official



● - corner this sheet