

**CERTIFIED CORNER RECORDATION**

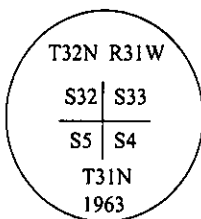
Corner NW Sec. Corner Sec. 4 T. 31N- R. 31W P.M, MT Lincoln County  
32N

I. 1901 G.L.O. Original Record by Abram L. Jaqueth: Set a granite stone, 14x10x8 ins., 9 ins. in the ground, for cor. of secs. 4,5,32&33, mkd. with 4 notches on E. and 2 notches on W. edges.

from which:

- A pine, 12 ins. diam., bears N79°E, 63 lks. dist., mkd. "T32N R31W S33 BT".
- A pine, 10 ins. diam., bears S28°30'E, 24 lks. dist., mkd. "T32N R31W S4 BT".
- A fir, 10 ins. diam., bears S84°30'W, 154 lks. dist., mkd. "T31N R31W S5 BT".
- A fir, 10 ins. diam., bears N72°30'W, 132 lks. dist., mkd. "T32N R31W S5 BT".

1963 B.L.M. Remonumentation Record by Gerald F. Pittman: The corner of secs. 4,5,32&33, on the S. Boundary of the Tp., monumented with a granite stone, 16x14x10 ins., firmly set and mkd. as described in the original record, and witnessed by the remains of the original bearing trees. At the corner point, set an iron post, 30 ins. long, 2 1/2 ins. diam., 26 ins. in the ground, with brass cap marked as shown:



Established two new bearing trees:

- A fir, 13 ins. diam., bears S48 1/2°E, 73 lks. dist., mkd. "T31N R31W S4 BT".
- A fir, 14 ins. diam., bears N22 1/2°W, 19 lks. dist., mkd. "T32N R31W S32 BT".

Bury the original stone alongside and raise a flat mound of stone, 3 ft. diam., around the iron post.

1990 Certified Corner Recordation filed at the Lincoln County Courthouse, by Ronald A. Pearson No. 9008LS: Found a 2 1/2 in. diam., iron pipe, protruding 4 ins. above the ground, firmly set, with a 3 1/4 in. diam. BLM brass cap mkd. as shown above. Monument witnessed by two B.L.M. bearing trees and the remains of two original bearing trees.

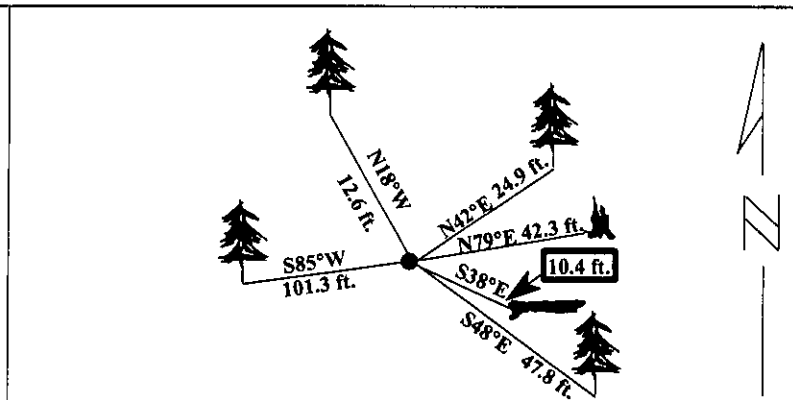
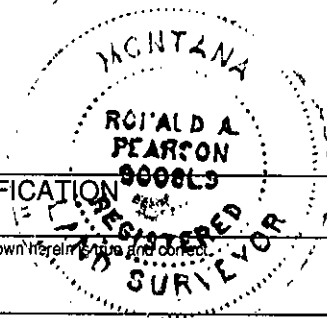
II. Found a 2 1/2 in. diam. iron pipe, protruding 4 ins. above the ground, firmly set, with 3 1/4 in. diam. brass cap mkd. as shown above.

from which:

- A high stump, 29 ins. diam., bears N79°E, 42.3 ft. dist., with visible scribe. (G.L.O.-record 63 lks.-"41.5 ft.")
- A rotten log, bears S38°E, 10.4 ft. dist., with visible scribe. (G.L.O.-record S28°30'E, 24 lks.-"15.8 ft.")
- A fir, 18 ins. diam., bears S48°E, 47.8 ft. dist., with visible scribe. (B.L.M.-record 73 lks.-"48.1 ft.")
- A fir, 21 ins. diam., bears S85°W, 101.3 ft. dist., with visible scribe. (G.L.O.-record 154 lks.-"99.6 ft.")
- A fir, 17 ins. diam., bears N18°W, 12.6 ft. dist., with visible scribe. (B.L.M.-record N22 1/2°W)

III. Established one new bearing tree:

- A fir, 6 ins. diam., bears N42°E, 24.9 ft. dist., mkd. "X BT".
- Painted bearing trees and attached Land Survey Monument and Bearing Tree signs.  
Magnetic Declination: 20° East



**SKETCH OF CORNER**

**CERTIFICATION**

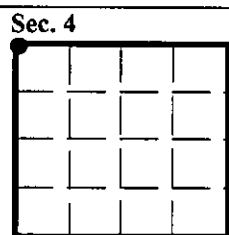
I. **Rex O. Rice**  
certify the information shown herein to be true and correct.  
*Rex O. Rice*  
Signature Ground Party Chief

I. **Ronald A. Pearson**  
certify that this Corner Record correctly represents work performed by me or under my direction in compliance with the "Corner Recordation Act" (70-22-101, et seq., M.C.A.)  
*Ronald A. Pearson*  
Signature of Surveyor & Seal

Date: 12/29/96  
Reg. No.: 9008LS  
Employer: U.S. FOREST SERVICE

Office of Clerk and Recorder, County of LINCOLN. This "corner record" was filed for record on FEB 3, 1997 and was noted on the cross-index plat and is assigned page No. 9112, in book No. \_\_\_\_\_.

**CORAL M. CUMMINGS**  
*Coral M. Cummings*  
County Official



Cross Index No. Z-9 T. 31N- R. 31W PMM  
32N