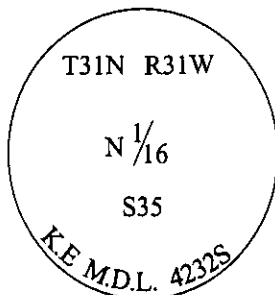


# CERTIFIED CORNER RECORDATION

Corner CN 1/16 Sec. 35 T. 31N R. 31W P.M., MT Lincoln County

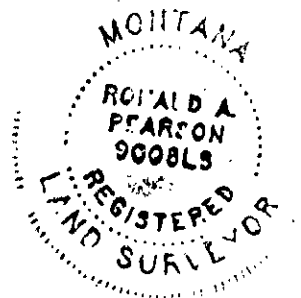
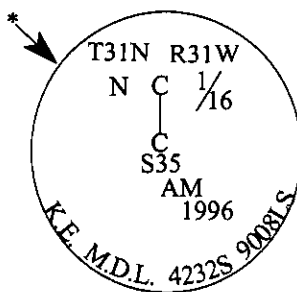
- I. 1977 Certificate of survey No. 354 By M.D.L. No. 4232S: Set by survey, a 2 1/2 in. diam. iron pipe, with a 2 3/4 in. diam., brass cap mkd. as shown:



- II. Found a 2 1/2" iron pipe, protruding 12 ins. above a collar of stone, firmly set, with a 2 3/4 in. diam. brass cap mkd as shown above.  
from which:

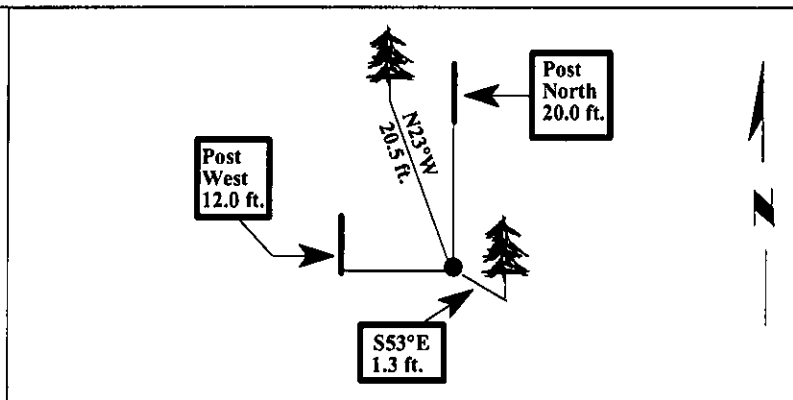
A fir, 11 ins. diam., bears S53°E, 1.3 ft. dist., mkd. with a healed face.  
A fir, 20 ins. diam., bears N23°W, 20.5 ft. dist., with a pitched face.

- III. \*Amended the monument as shown below:



Set a 6 ft. steel guard post, West, 12.0 ft., with Land Survey Monument and Property Boundary decals.  
Set a 6 ft. steel guard post, North, 20.0 ft., with Land Survey Monument and Property Boundary decals.  
Painted bearing trees and attached Land Survey Monument and Bearing Tree signs.

Magnetic Declination: 20° East.



SKETCH OF CORNER

CERTIFICATION

I, Thomas Hemmel  
certify the information shown herein to be true and correct.

I, Ronald A. Pearson  
certify that this Corner Record correctly represents work performed by me or under my direction in compliance with the "Corner Recordation Act" (70-22-101, et seq., M.C.A.)

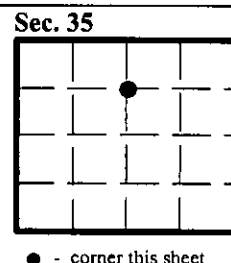
Signature of Surveyor & Seal

Date: 12/30/96

Reg. No.: 9008LS

Employer: U.S. FOREST SERVICE

Office of Clerk and Recorder, County of LINCOLN. This "corner record" was filed for record on FEB 3, 1997 and was noted on the cross-index plat and is assigned page No. 9110, in book No. CORAL M. CUMMINGS County Official By JAB



● - corner this sheet

Cross Index No. W-19 T. 31N R. 31W P.M., MT