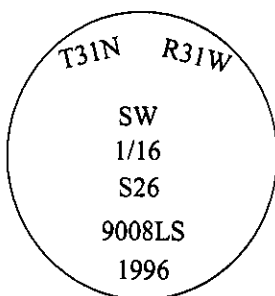


CERTIFIED CORNER RECORDATION

Corner SW 1/16 Sec. 26 T. 31N R. 31W P.M., MT Lincoln County

- I. 1992 Certificate of survey No. 1971 By J.R. Staples No. 9958LS: Set a 5/8 in. rebar, capped 9958LS.
- II. Found a 5/8" rebar, protruding 4 ins. above the ground, firmly set, with a red plastic cap mkd. J.R. 9958LS.
- III. At the position determined by survey, accepted the found monument and set a 30 in. long, 2 1/2 in. diam. pipe, 26 ins. in the ground, with a 3 1/4" aluminum cap mkd. as shown:



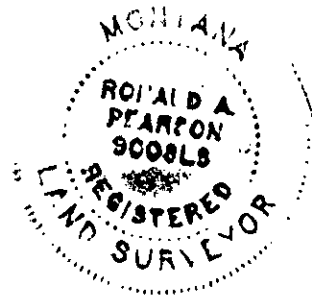
from which:

- A pine, 11 ins. diam., S25°E, 17.4 ft. dist., mkd. "SW 1/16 S26 BT".
- A pine, 11 ins. diam., S64°W, 28.4 ft. dist., mkd. "SW 1/16 S26 BT".

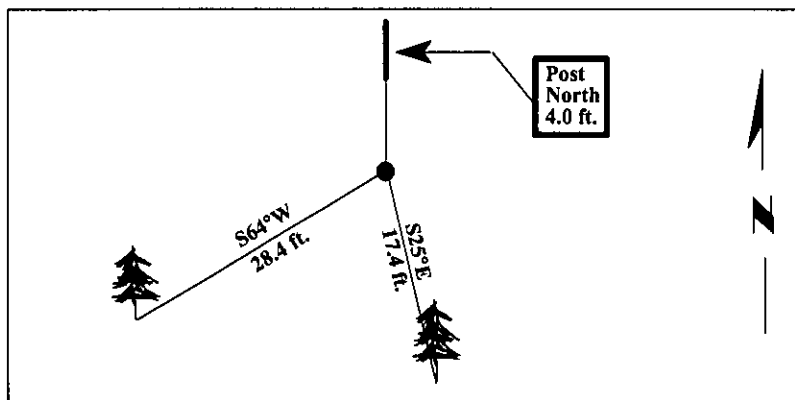
Set a 6 ft. steel guard post, North, 4.0 ft., with Land Survey Monument and Property Boundary decals.

Placed the found rebar inside the aluminum monument.

Painted bearing trees and attached Land Survey Monument and Bearing Tree signs.



Magnetic Declination: 20° East.



SKETCH OF CORNER

CERTIFICATION

I, Thomas M. Hommel
certify the information shown herein is true and correct.

I, Ronald A. Pearson
certify that this Corner Record correctly represents work performed by me or under my direction in compliance with the "Corner Recordation Act" (70-22-101, et seq., M.C.A.)

Signature of Surveyor & Seal

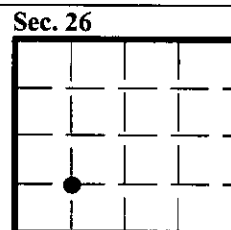
Date: 12/30/96

Reg. No.: 9008LS

Employer: U.S. FOREST SERVICE

Office of Clerk and Recorder, County of LINCOLN. This "corner record" was filed for record on FEB 3, 1997 and was noted on the cross-index plat and is assigned page No. 9106, in book No. _____.

CORAL M. CUMMINGS
County Official *By OJB*



● - corner this sheet