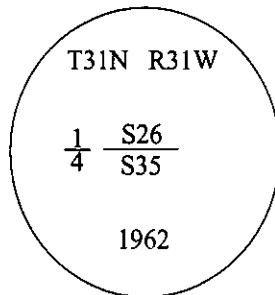


# CERTIFIED CORNER RECORDATION

Corner 1/4 Sec. 26 & 35 T. 31N R. 31W P.M., MT Lincoln County

I. 1893 G.L.O. Original Record by Daniel P. Mumbrue et. al.: Set a wooden post, 3 ft. long, 3 ins. square, 24 ins. in the ground, for 1/4 Sec. Cor., mkd. "1/4 S" on the N. face. Established two bearing trees.

1964 B.L.M. Remonumentation Record by Gerald F. Pitman et. al.: The 1/4 sec. cor. of secs. 26 & 35, determined from the remains of the original bearing trees. At the corner point, set an iron post, 30 ins. long, 2 1/2 ins. diam., 26 ins. in the ground, with brass cap mkd. as shown:



Established two new bearing trees:

A pine, 12 ins. diam., bears S46°W, 20 lks. dist., mkd. "1/4 S35 BT".  
A pine, 12 ins. diam., bears N32°W, 99 lks. dist., mkd. "1/4 S26 BT".

Raise a flat mound of stone, 3 ft. diam., around the iron post.

I Found a 2 1/2 in. iron pipe, protruding 4 ins. above the ground, firmly set, with 3 1/4 in. diam. brass cap mkd. as shown above.

from which:

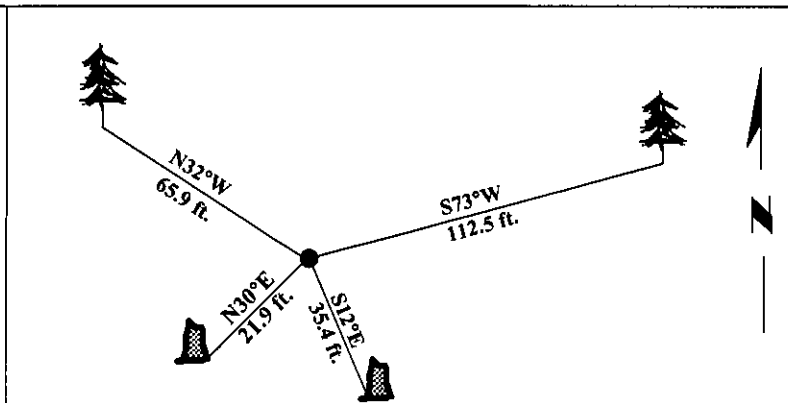
A stump, N30°E, 21.9 ft. (33 lks.) dist., with no visible scribe. (GLO-record-35 lks.)  
A stump, S12°E, 35.4 ft. (54 lks.) dist., with no visible scribe. (GLO-record-50 lks.)  
A pine, 18 ins. diam., N32°W, 65.9 ft. dist., mkd. with a healed face. (BLM-record)

III. Established one new bearing tree:

A pine, 14 ins. diam., bears S73°W, 112.5 ft. dist., mkd. "1/4 S35 BT".

Painted bearing trees and attached Land Survey Monument and Bearing Tree signs.

Magnetic Declination: 20° East.



SKETCH OF CORNER

CERTIFICATION

I, Thomas Hömmel  
certify the information shown herein is true and correct.

I, Ronald A. Pearson  
certify that this Corner Record correctly represents work performed by me or under my direction in compliance with the "Corner Recordation Act" (70-22-101, et seq., M.C.A.)

Signature of Surveyor & Seal

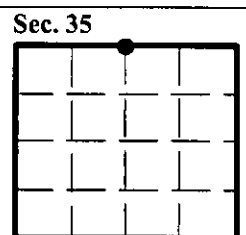
Date: 12/30/96

Reg. No.: 9008LS

Employer: U.S. FOREST SERVICE

Office of Clerk and Recorder, County of LINCOLN. This "corner record" was filed for record on FEB 3, 1997 and was noted on the cross-index plat and is assigned page No. 9104, in book No. CORAL M. CUMMINGS

County Official



• - corner this sheet