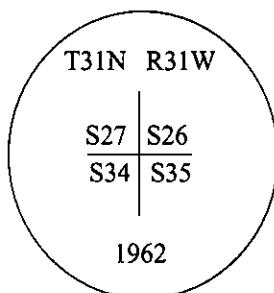


CERTIFIED CORNER RECORDATION

Corner Sec. Cor. Sec. 26,27, 34&35 T. 31N R. 31W P.M., MT Lincoln County

I. 1893 G.L.O. Original Record by Daniel P. Mumbrue: Set a wooden post, 4 ft. long, 4 ins. square, 24 ins. in the ground, for cor. to secs. 26,27,34,&35, mkd. "T31N Sec. 26" on N.E., "R31W Sec. 35" on S.E., "Sec. 34" on S.W. and "Sec. 27" on N.W. faces, with 1 notch on S. and 2 notches on E. edges. Established four bearing trees.

1962 B.L.M. Remonumentation Record by Gerald F. Pitman et.al.: The cor. of secs. 26,27,34,&35, monumented with an iron pipe, 2 ft. long, 3/4 in. diam., firmly set in a mound of stone, and witnessed by the remains of three of the orig. bearing trees and by three bearing trees of unknown origin. At the corner point, set an iron post, 30 ins. long, 2 1/2 ins. diam., 25 ins. in the ground, in a mound of stone, 4 ft. diam., to top, with the brass cap mkd. as shown:



Established one new bearing tree and buried the iron pipe alongside of the iron post.

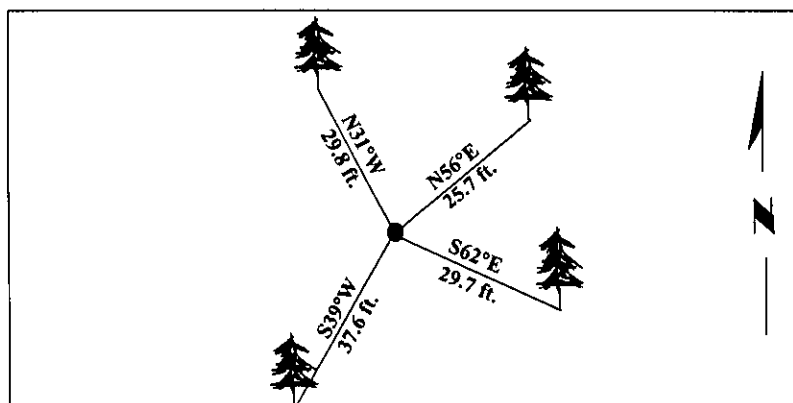
II. Found a 2 1/2 in. iron post, protruding 3 ins. above the ground, firmly set, with a 3 1/4 in. diam. brass cap mkd. as shown above.

from which:

- A pine, 16 ins. diam., bears N56°E, 25.7 ft. dist., mkd. with a healed face. (unknown origin)
- A pine, 11 ins. diam., bears S62°E, 29.7 ft. dist., mkd. with visible scribe. (BLM-record)
- A pine, 18 ins. diam., bears S39°W, 37.6 ft. dist., mkd. with visible scribe. (unknown origin)
- A pine, 18 ins. diam., bears N31°W, 29.8 ft. dist., mkd. with a healed face. (unknown origin)
- No evidence exists of GLO original bearing trees.

II Painted bearing trees and attached Land Survey Monument and Bearing Tree signs.

Magnetic Declination: 20° East.



SKETCH OF CORNER

CERTIFICATION

I. Thomas Hommel
certify the information shown herein to be correct.

Thomas Hommel
LAND SURVEYOR

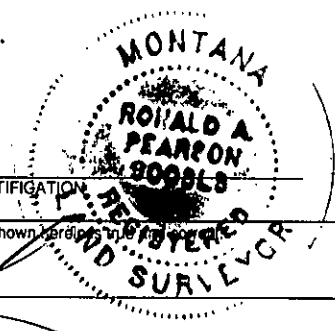
I. Ronald A. Pearson
certify that this Corner Record correctly represents work performed by me or under my direction in compliance with the "Corner Recordation Act" (70-22-101, et seq., M.C.A.)

Ronald A. Pearson
Signature of Surveyor & Seal

Date: 12/30/96

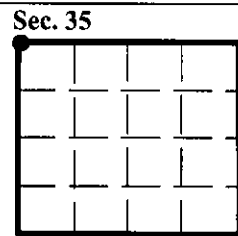
Reg. No.: 9008LS

Employer: U.S. FOREST SERVICE



Office of Clerk and Recorder, County of LINCOLN. This "corner record" was filed for record on FEB 3, 1997 and was noted on the cross-index plat and is assigned page No: 9103, in book No. _____.

CORAL M. CUMMINGS *By DHB*
County Official



● - corner this sheet